

Recombinant Human HMOX1 Protein, Myc/DDK-tagged, C13 and N15-labeled

Cat. No. HMOX1-5723H **Lot. No.** (See product label)

SPECIFICATION

Product Overview	HMOX1 MS Standard C13 and N15-labeled recombinant protein (NP_002124) with a C-terminal MYC/DDK tag, was expressed in HEK293 cells.
Species	Human
Source	HEK293
Description	Heme oxygenase, an essential enzyme in heme catabolism, cleaves heme to form biliverdin, which is subsequently converted to bilirubin by biliverdin reductase, and carbon monoxide, a putative neurotransmitter. Heme oxygenase activity is induced by its substrate heme and by various nonheme substances. Heme oxygenase occurs as 2 isozymes, an inducible heme oxygenase-1 and a constitutive heme oxygenase-2. HMOX1 and HMOX2 belong to the heme oxygenase family.
Molecular Mass	32.8 kDa
AA Sequence	MERPQPDSMPQDLSEALKEATKEVHTQAENAEFMRNFQKGQVTRDGFKLVMASLY HIYVALEEEIERNKESPVFAPVYFPEELHRKAALQDLAFWYGPRWQEVIPYTPAMQ HYVKRLHEVGRTEPELLVAHAYTRYLGDLSGGQVLKkiaQKALDLPSSGEGLAFFTF PNIASATKFKQLYRSRMNSLEMPAVRQRVIEEAKTAFLLNIQLFEELQELLTHDTKD QSPSRAPGLRQRASNKVQDSAPVETPRGKPLNTRSQAPLLRWLTLVATVAV GLYAMTRTRPLEQKLISEEDLAANDILDYKDDDDKV
Purity	> 80% as determined by SDS-PAGE and Coomassie blue staining

 Tel: 1-631-559-9269 1-516-512-3133

 Email: info@creative-biomart.com  Fax: 1-631-938-8127

 45-1 Ramsey Road, Shirley, NY 11967, USA

Stability	Stable for 3 months from receipt of products under proper storage and handling conditions.
Storage	Store at -80 centigrade. Avoid repeated freeze-thaw cycles.
Concentration	50 µg/mL as determined by BCA
Storage Buffer	100 mM glycine, 25 mM Tris-HCl, pH 7.3.

GENE INFORMATION

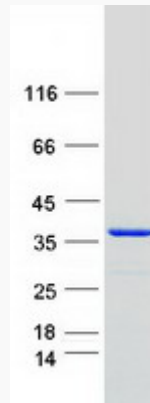
Gene Name	HMOX1 heme oxygenase 1 [Homo sapiens (human)]
Official Symbol	HMOX1
Synonyms	HMOX1; heme oxygenase (decycling) 1; heme oxygenase 1; bK286B10; HO 1; heat shock protein, 32-kD; HO-1; HSP32;
Gene ID	3162
mRNA Refseq	NM_002133
Protein Refseq	NP_002124
MIM	141250
UniProt ID	P09601

 Tel: 1-631-559-9269 1-516-512-3133

 Email: info@creative-biomart.com  Fax: 1-631-938-8127

 45-1 Ramsey Road, Shirley, NY 11967, USA

SDS-PAGE



 Tel: 1-631-559-9269 1-516-512-3133

 Email: info@creative-biomart.com  Fax: 1-631-938-8127

 45-1 Ramsey Road, Shirley, NY 11967, USA