

Recombinant Human HMOX2 Protein, His-tagged

Cat. No. HMOX2-062H Lot. No. (See product label)

SPECIFICATION

Product Overview	Recombinant N-terminal His-tagged human HO-2/HMOX2 protein (2-264) was purified from E. coli.
Species	Human
Source	E.coli
ProteinLength	2-264
Description	<p>Heme oxygenase, an essential enzyme in heme catabolism, cleaves heme to form biliverdin, which is subsequently converted to bilirubin by biliverdin reductase, and carbon monoxide, a putative neurotransmitter. Heme oxygenase activity is induced by its substrate heme and by various nonheme substances. Heme oxygenase occurs as 2 isozymes, an inducible heme oxygenase-1 and a constitutive heme oxygenase-2. HMOX1 and HMOX2 belong to the heme oxygenase family. Several alternatively spliced transcript variants encoding three different isoforms have been found for this gene.</p>
Molecular Mass	32.6 kDa
Purity	≥90% as determined by SDS-PAGE
Stability	≥ 6 months
Storage	At -80 centigrade.

 Tel: 1-631-559-9269 1-516-512-3133

 Email: info@creative-biomart.com  Fax: 1-631-938-8127

 45-1 Ramsey Road, Shirley, NY 11967, USA

Storage Buffer 50 mM HEPES, pH 8.0, 150 mM sodium chloride

GENE INFORMATION

Gene Name HMOX2 heme oxygenase 2 [Homo sapiens (human)]

Official Symbol HMOX2

Synonyms HMOX2; heme oxygenase 2; HO-2; heme oxygenase 2; heme oxygenase (decycling) 2; EC 1.14.14.18

Gene ID 3163

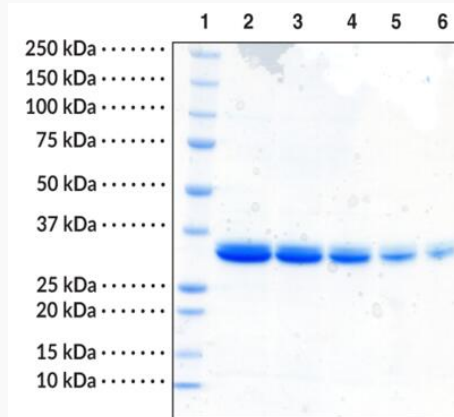
mRNA Refseq NM_002134

Protein Refseq NP_002125

MIM 141251

UniProt ID P30519

SDS-PAGE analysis of HMOX2



 Tel: 1-631-559-9269 1-516-512-3133

 Email: info@creative-biomart.com  Fax: 1-631-938-8127

 45-1 Ramsey Road, Shirley, NY 11967, USA



Lane 1: MW Markers

Lane 2: HMOX2 (8 µg)

Lane 3: HMOX2 (6 µg)

Lane 4: HMOX3 (4 µg)

Lane 5: HMOX2 (2 µg)

Lane 6: HMOX2 (1 µg)

 Tel: 1-631-559-9269 1-516-512-3133

 Email: info@creative-biomart.com  Fax: 1-631-938-8127

 45-1 Ramsey Road, Shirley, NY 11967, USA