

Recombinant Human HMOX2 Protein, Myc/DDK-tagged, C13 and N15-labeled

Cat. No. HMOX2-2030H **Lot. No.** (See product label)

SPECIFICATION

Product Overview	HMOX2 MS Standard C13 and N15-labeled recombinant protein (NP_001120677) with a C-terminal MYC/DDK tag, was expressed in HEK293 cells.
Species	Human
Source	HEK293
Description	Heme oxygenase, an essential enzyme in heme catabolism, cleaves heme to form biliverdin, which is subsequently converted to bilirubin by biliverdin reductase, and carbon monoxide, a putative neurotransmitter. Heme oxygenase activity is induced by its substrate heme and by various nonheme substances. Heme oxygenase occurs as 2 isozymes, an inducible heme oxygenase-1 and a constitutive heme oxygenase-2. HMOX1 and HMOX2 belong to the heme oxygenase family. Several alternatively spliced transcript variants encoding three different isoforms have been found for this gene.
Molecular Mass	36 kDa
AA Sequence	MSAEVETSEGVDESEKKNNGALEKENQMRMADLSELLKEGTKEAHDRAENTQFVK DFLKGNIKKELFKLATTALYFTYSALEEEMERNKDHAPAFAPLYFPMELHRKEALTKDM EYFFGENWEEQVQCPKAAQKYVERIHIGQNEPELLVAHAYTRYMGDLSGGQVLKK VAQRALKLPSTGEGTQFYLFENVDNAQQFKQLYRARMNALDLNMKTKERIVEEANK AFEYNMQIFNELDQAGSTLARETLEDGFPVHDGKGDMRKCPFYAAEQDKGALEGS

 Tel: 1-631-559-9269 1-516-512-3133

 Email: info@creative-biomart.com  Fax: 1-631-938-8127

 45-1 Ramsey Road, Shirley, NY 11967, USA

SCPFRTAMAVLRKPSLQFILAAGVALAAGLLAWYYMTRTRPLEQKLISEEDLAANDIL
DYKDDDDKV

Purity > 80% as determined by SDS-PAGE and Coomassie blue staining

Stability Stable for 3 months from receipt of products under proper storage and handling conditions.

Storage Store at -80 centigrade. Avoid repeated freeze-thaw cycles.

Concentration 50 µg/mL as determined by BCA

Storage Buffer 100 mM glycine, 25 mM Tris-HCl, pH 7.3.

GENE INFORMATION

Gene Name HMOX2 heme oxygenase 2 [Homo sapiens (human)]

Official Symbol HMOX2

Synonyms HMOX2; heme oxygenase (decycling) 2; heme oxygenase 2; HO 2; HO-2;

Gene ID 3163

mRNA Refseq NM_001127205

Protein Refseq NP_001120677

MIM 141251

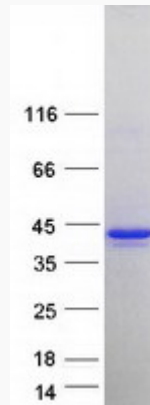
UniProt ID P30519

 Tel: 1-631-559-9269 1-516-512-3133

 Email: info@creative-biomart.com  Fax: 1-631-938-8127

 45-1 Ramsey Road, Shirley, NY 11967, USA

SDS-PAGE



 Tel: 1-631-559-9269 1-516-512-3133

 Email: info@creative-biomart.com  Fax: 1-631-938-8127

 45-1 Ramsey Road, Shirley, NY 11967, USA