

# Recombinant Human HMX1 Protein, Myc/DDK-tagged, C13 and N15-labeled

**Cat. No.** HMX1-1531H    **Lot. No.** (See product label)

## SPECIFICATION

### Product Overview

HMX1 MS Standard C13 and N15-labeled recombinant protein (NP\_061815) with a C-terminal MYC/DDK tag, was expressed in HEK293 cells.

### Species

Human

### Source

HEK293

### Description

This gene encodes a transcription factor that belongs to the H6 family of homeobox proteins. This protein can bind a 5'-CAAG-3' core DNA sequence, and it is involved in the development of craniofacial structures. Mutations in this gene cause oculoauricular syndrome, a disorder of the eye and external ear.

### Molecular Mass

36 kDa

### AA Sequence

MPDELTEPGRATPARASSFLIENLLAAEAKGAGRATQGDGSREDEEEDDDDPED  
 AEQARRRRLQRRRQLLAGTGPGGEARARALLGPGALGLGPRPPPGPGPPFALGCG  
 GAARWYPRAHGGYGGGLSPDTSRDRSPETGEEMGRAEGAWPRGPGPGAVQREA  
 AELAARGPAAGTEEASELAEVPAAGETRGGVGVGGGRKKKTRTVFSRSQVFQLE  
 STFDLKRYLSSAERAGLAASLQLTETQVKIWFQNRNKKWKRQLAAELEAASLSPPG  
 AQRLVRVPVLYHESPPAAAAAGPPATLPFPLAPAAPAPPPPLLGFSGALAYPLAAFP  
 AAASVPFLRAQMPGLVTRTRPLEQKLISEEDLAANDILDYKDDDDKV

### Purity

> 80% as determined by SDS-PAGE and Coomassie blue staining

 Tel: 1-631-559-9269    1-516-512-3133

 Email: [info@creative-biomart.com](mailto:info@creative-biomart.com)     Fax: 1-631-938-8127

 45-1 Ramsey Road, Shirley, NY 11967, USA



<b>Stability</b>	Stable for 3 months from receipt of products under proper storage and handling conditions.
<b>Storage</b>	Store at -80 centigrade. Avoid repeated freeze-thaw cycles.
<b>Concentration</b>	50 µg/mL as determined by BCA
<b>Storage Buffer</b>	100 mM glycine, 25 mM Tris-HCl, pH 7.3.

## GENE INFORMATION

<b>Gene Name</b>	HMX1 H6 family homeobox 1 [ Homo sapiens (human) ]
<b>Official Symbol</b>	HMX1
<b>Synonyms</b>	HMX1; H6 family homeobox 1; H6; NKX5-3; homeobox protein HMX1; H6 homeodomain protein; homeobox protein H6
<b>Gene ID</b>	3166
<b>mRNA Refseq</b>	NM_018942
<b>Protein Refseq</b>	NP_061815
<b>MIM</b>	142992
<b>UniProt ID</b>	Q9NP08

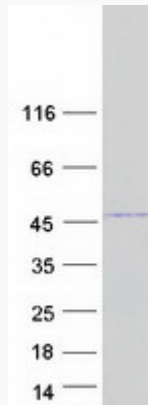
Tel: 1-631-559-9269 1-516-512-3133

Email: [info@creative-biomart.com](mailto:info@creative-biomart.com) Fax: 1-631-938-8127

45-1 Ramsey Road, Shirley, NY 11967, USA



SDS-PAGE



Tel: 1-631-559-9269 1-516-512-3133

Email: [info@creative-biomart.com](mailto:info@creative-biomart.com) Fax: 1-631-938-8127

45-1 Ramsey Road, Shirley, NY 11967, USA