

## Recombinant Human HMX2 Protein, GST-tagged

**Cat. No.** HMX2-4889H    **Lot. No.** (See product label)

### SPECIFICATION

<b>Product Overview</b>	Human HMX2 partial ORF (NP_005510.1, 125 a.a. - 224 a.a.) recombinant protein with GST tag at N-terminal.
<b>Species</b>	Human
<b>Source</b>	Wheat Germ
<b>ProteinLength</b>	125-224 a.a.
<b>Description</b>	The protein encoded by this gene is a member of the NKL homeobox family of transcription factors. Members in this family are of ancient origin and play an important role in organ development during embryogenesis. A related mouse protein plays a role in patterning of inner ear structures. In humans, variations in a region containing this gene have been associated with inner ear malformations, vestibular dysfunction, and hearing loss. [provided by RefSeq, Aug 2012]
<b>Molecular Mass</b>	36.63 kDa
<b>AA Sequence</b>	PAGSPSPGSRPRDGG AERQAGAAKKKTRTVFSRSQVYQLESTFDMKRYLSSSER ACLASSLQLTETQVKTW FQNRRNKWKRQLSAELEAANMAHASAQT
<b>Applications</b>	Enzyme-linked Immunoabsorbent Assay Western Blot (Recombinant protein) Antibody Production Protein Array

 Tel: 1-631-559-9269    1-516-512-3133

 Email: [info@creative-biomart.com](mailto:info@creative-biomart.com)     Fax: 1-631-938-8127

 45-1 Ramsey Road, Shirley, NY 11967, USA

<b>Notes</b>	Best use within three months from the date of receipt of this protein.
<b>Storage</b>	Store at -8 centigrade. Aliquot to avoid repeated freezing and thawing.
<b>Storage Buffer</b>	50 mM Tris-HCl, 10 mM reduced Glutathione, pH=8.0 in the elution buffer.

## GENE INFORMATION

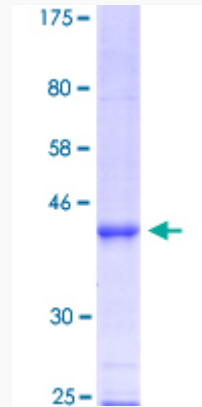
<b>Gene Name</b>	HMX2 H6 family homeobox 2 [ Homo sapiens ]
<b>Official Symbol</b>	HMX2
<b>Synonyms</b>	HMX2; H6 family homeobox 2; homeo box (H6 family) 2; homeobox protein HMX2; NKX5 2; H6 homeo box 2; homeobox (H6 family) 2; homeobox protein H6 family member 2; H6L; Nkx5-2;
<b>Gene ID</b>	3167
<b>mRNA Refseq</b>	NM_005519
<b>Protein Refseq</b>	NP_005510
<b>MIM</b>	600647
<b>UniProt ID</b>	A2RU54

 Tel: 1-631-559-9269 1-516-512-3133

 Email: [info@creative-biomart.com](mailto:info@creative-biomart.com)  Fax: 1-631-938-8127

 45-1 Ramsey Road, Shirley, NY 11967, USA

**Quality Control  
Testing**



12.5% SDS-PAGE Stained with Coomassie Blue

 Tel: 1-631-559-9269 1-516-512-3133

 Email: [info@creative-biomart.com](mailto:info@creative-biomart.com)  Fax: 1-631-938-8127

 45-1 Ramsey Road, Shirley, NY 11967, USA