

Recombinant Human HNF1A Protein, GST-tagged

Cat. No. HNF1A-4891H Lot. No. (See product label)

SPECIFICATION

Product Overview	Human HNF1A partial ORF (P20823, 532 a.a. - 631 a.a.) recombinant protein with GST tag at N-terminal.
Species	Human
Source	Wheat Germ
ProteinLength	532-631 a.a.
Description	The protein encoded by this gene is a transcription factor required for the expression of several liver-specific genes. The encoded protein functions as a homodimer and binds to the inverted palindrome 5-GTTAATNATTAAC-3. Defects in this gene are a cause of maturity onset diabetes of the young type 3 (MODY3) and also can result in the appearance of hepatic adenomas. [provided by RefSeq]
Molecular Mass	36.63 kDa
AA Sequence	ALASLTPTKQVFTSDTEASSEGLHTPASQATTLHVPSQDPAGIQHLQPAHRLSASP TVSSSSLVLYQSSDSSNGQSHLLPSNHSVIETFISTQMASSSQ
Applications	Enzyme-linked Immunoabsorbent Assay Western Blot (Recombinant protein) Antibody Production Protein Array

 Tel: 1-631-559-9269 1-516-512-3133

 Email: info@creative-biomart.com  Fax: 1-631-938-8127

 45-1 Ramsey Road, Shirley, NY 11967, USA

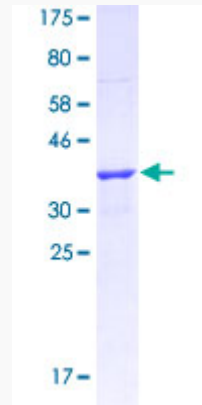
Notes	Best use within three months from the date of receipt of this protein.
Storage	Store at -8 centigrade. Aliquot to avoid repeated freezing and thawing.
Storage Buffer	50 mM Tris-HCl, 10 mM reduced Glutathione, pH=8.0 in the elution buffer.
GENE INFORMATION	
Gene Name	HNF1A HNF1 homeobox A [Homo sapiens]
Official Symbol	HNF1A
Synonyms	HNF1A; HNF1 homeobox A; MODY3, TCF1, transcription factor 1, hepatic; LF B1, hepatic nuclear factor (HNF1), albumin proximal factor; hepatocyte nuclear factor 1-alpha; HNF1; LFB1; HNF-1-alpha; albumin proximal factor; hepatic nuclear factor 1; transcription factor 1, hepatic; interferon production regulator factor; liver-specific transcription factor LF-B1; TCF1; MODY3; TCF-1; HNF-1A; IDDM20;
Gene ID	6927
mRNA Refseq	NM_000545
Protein Refseq	NP_000536
MIM	142410
UniProt ID	P20823

 Tel: 1-631-559-9269 1-516-512-3133

 Email: info@creative-biomart.com  Fax: 1-631-938-8127

 45-1 Ramsey Road, Shirley, NY 11967, USA

**Quality Control
Testing**



12.5% SDS-PAGE Stained with Coomassie Blue

 Tel: 1-631-559-9269 1-516-512-3133

 Email: info@creative-biomart.com  Fax: 1-631-938-8127

 45-1 Ramsey Road, Shirley, NY 11967, USA