

Recombinant Human HNRNPA2B1 protein(11-320 aa), C-His-tagged

Cat. No. HNRNPA2B1-2699H **Lot. No.** (See product label)

SPECIFICATION

Product Overview	Recombinant Human HNRNPA2B1 protein(P22626)(11-320 aa), fused with C-terminal His tag, was expressed in E. coli.
Species	Human
Source	E.coli
ProteinLength	11-320 aa
Form	0.15 M Phosphate buffered saline
Molecular Mass	36 kDa
Storage	Shipped on dry ice. Avoid repeated freeze-thaw cycles. Upon receipt, 2 days when stored at 2 to 8 °C after thawing. Up to 12 months when aliquoted and stored at -20 to -80°C.
Reconstitution	It is recommended that sterile water be added to the vial to prepare a stock solution of 0.2 ug/ul. Centrifuge the vial at 4°C before opening to recover the entire contents.
AA Sequence	ERKKREKEQFRKLFIGGLSFETTEESLRNYYEQWGKLTDCVVMRDPASKRSRGFGF VTFSSMAEVDAAMAARPHSIDGRVVEPKRAVAREESGKPGAHVTVKKLFVGGIKED TEEHHLRDYFEEYGGKIDTIEIITDRQSGKRGFGFVTFDDHDPVDKIVLQKYHTINGHN AEVRKALSRQEMQEVQSSRSRGGNFGFGDSRGGGGNFGPGPGSNFRGGSDGY

 Tel: 1-631-559-9269 1-516-512-3133

 Email: info@creative-biomart.com  Fax: 1-631-938-8127

 45-1 Ramsey Road, Shirley, NY 11967, USA



GSGRGFSGDGYNGYGGGPGGGNFGGSPGYGGGRGGYGGGGPGYGNQGGGYGG
GYDNYGGGNYGSGNYNDFGNYNQQPSNYGPMKSGN

GENE INFORMATION

Gene Name [HNRNPA2B1 heterogeneous nuclear ribonucleoprotein A2/B1 \[Homo sapiens \]](#)

Official Symbol [HNRNPA2B1](#)

Synonyms HNRNPA2B1; heterogeneous nuclear ribonucleoprotein A2/B1; HNRPA2B1; heterogeneous nuclear ribonucleoproteins A2/B1; hnRNP A2 / hnRNP B1; nuclear ribonucleoprotein particle A2 protein; RNPA2; HNRPA2; HNRPB1; SNRPB1; HNRNPA2; HNRNPB1; FLJ22720; DKFZp779B0244;

Gene ID [3181](#)

mRNA Refseq [NM_002137](#)

Protein Refseq [NP_002128](#)

MIM [600124](#)

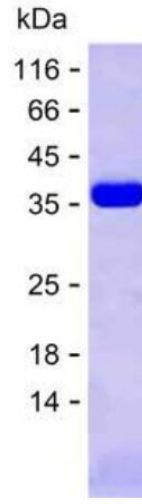
UniProt ID [P22626](#)

Tel: 1-631-559-9269 1-516-512-3133

Email: info@creative-biomart.com Fax: 1-631-938-8127

45-1 Ramsey Road, Shirley, NY 11967, USA

SDS-PAGE



 Tel: 1-631-559-9269 1-516-512-3133

 Email: info@creative-biomart.com  Fax: 1-631-938-8127

 45-1 Ramsey Road, Shirley, NY 11967, USA