

Recombinant Human HOMER1 protein, His-tagged

Cat. No. HOMER1-405H Lot. No. (See product label)

SPECIFICATION

Product Overview	Recombinant Human HOMER1 protein(1-354 aa), fused with N-terminal His tag, was expressed in E.coli.
Species	Human
Source	E.coli
ProteinLength	1-354 aa
Form	The purified protein was Lyophilized from sterile PBS (58mM Na ₂ HPO ₄ , 17mM NaH ₂ PO ₄ , 68mM NaCl, pH7.4). 5 % trehalose and 5 % mannitol are added as protectant before lyophilization. The elution buffer contain 300mM imidazole.
AASequence	MGEQPIFSTRAHVFQIDPNTKKNWVPTSKHAVTVSYFYDSTRNVYRIISLDGSKAIINS TITPNMTFTKTSQKFGQWADSRANTVYGLGFSSEHHLSKFAEKQEFKEAARLAKE KSQEKMELTSTPSQESAGGDLQSPLTPESINGTDDERTPDVTQNSEPRAEPTQNAL PFSHSSAISKHWEAELATLKGNNAKLTAALLESTANVKQWKQQLAAYQEEAERLHK RVTELECVSSQANAVHHTKTELNQTIQELEETLKLKEEEIERLKQEIDNARELQEQRD SLTQKLQEVEIRNKDLEGQLSDLEQRLEKSQNEQEAFRNNLKTLLLEILDGKIFELTEL RDNLAKLLECS
Purity	80%, by SDS-PAGE with Coomassie Brilliant Blue staining.
Storage	Store at 2-8°C for 1-2 weeks. Aliquot and store at -20°C to -80°C for up to 3 months, reconstitution with sterile water and addition of an equal volume of glycerol. Avoid

 Tel: 1-631-559-9269 1-516-512-3133

 Email: info@creative-biomart.com  Fax: 1-631-938-8127

 45-1 Ramsey Road, Shirley, NY 11967, USA

repeat freeze-thaw cycles.

Reconstitution

Dissolve the product in 200 µl sterile water to achieve a working concentration of 0.25 g/µl. If experimental compatibility allows, mix the aqueous solution with an equal volume of glycerol (1:1 ratio) after initial reconstitution.

GENE INFORMATION

Gene Name HOMER1 homer homolog 1 (Drosophila) [Homo sapiens]

Official Symbol HOMER1

Synonyms HOMER1; homer homolog 1 (Drosophila); homer protein homolog 1; HOMER 1B; SYN47; Ves 1; homer-1; homer, neuronal immediate early gene, 1; HOMER; Ves-1; HOMER1A; HOMER1B; HOMER1C;

Gene ID 9456

mRNA Refseq NM_004272

Protein Refseq NP_004263

MIM 604798

UniProt ID Q86YM7

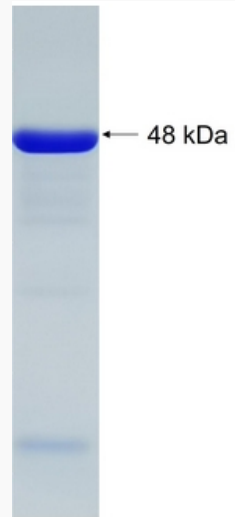
 Tel: 1-631-559-9269 1-516-512-3133

 Email: info@creative-biomart.com  Fax: 1-631-938-8127

 45-1 Ramsey Road, Shirley, NY 11967, USA



SDS-PAGE



☎ Tel: 1-631-559-9269 1-516-512-3133

☎ Email: info@creative-biomart.com ☎ Fax: 1-631-938-8127

☎ 45-1 Ramsey Road, Shirley, NY 11967, USA