

# Recombinant Human HOMER3 Protein, Myc/DDK-tagged, C13 and N15-labeled

**Cat. No.** HOMER3-1115H    **Lot. No.** (See product label)

## SPECIFICATION

### Product Overview

HOMER3 MS Standard C13 and N15-labeled recombinant protein (NP\_001139194) with a C-terminal MYC/DDK tag, was expressed in HEK293 cells.

### Species

Human

### Source

HEK293

### Description

This gene encodes a member of the HOMER family of postsynaptic density scaffolding proteins that share a similar domain structure consisting of an N-terminal Enabled/vasodilator-stimulated phosphoprotein homology 1 domain which mediates protein-protein interactions, and a carboxy-terminal coiled-coil domain and two leucine zipper motifs that are involved in self-oligomerization. The encoded protein binds numerous other proteins including group I metabotropic glutamate receptors, inositol 1,4,5-trisphosphate receptors and amyloid precursor proteins and has been implicated in diverse biological functions such as neuronal signaling, T-cell activation and trafficking of amyloid beta peptides. Alternative splicing results in multiple transcript variants.

### Molecular Mass

39.9 kDa

### AA Sequence

MSTAREQPIFSTRAHV FQIDPATKRNWIPAGKHALTVSYFYDATRNVYRIISIGGAKAII  
 NSTVTPNMTFTKTSQKFGQWADSRANTVYGLGFASEQHLTQFAEKFQEVKEAARL  
 AREKSQDGGELTSPALGLASHQVPPSPLVSANGPGEEKLFRSQSADAPGPTERERL

 Tel: 1-631-559-9269    1-516-512-3133

 Email: [info@creative-biomart.com](mailto:info@creative-biomart.com)     Fax: 1-631-938-8127

 45-1 Ramsey Road, Shirley, NY 11967, USA

KKMLSEGSVGEVQWEAEFFALQDSNNKLAGALREANAAAAQWRQQLEAQRAEAE  
 RLRQRVAELEAQAASEVTPPTGEKEGLGQQQSLEQLEALVQTKDQEIQTLKSQTGGP  
 REALEAAEREETQQKVQDLETRNAELEHQLRAMERSLEEARAERERARAEVGRAA  
 QLLDVRLFELSELREGLARLAEAAPTRTRPLEQKLISEEDLAANDILDYKDDDDKV

**Purity** > 80% as determined by SDS-PAGE and Coomassie blue staining

**Stability** Stable for 3 months from receipt of products under proper storage and handling conditions.

**Storage** Store at -80 centigrade. Avoid repeated freeze-thaw cycles.

**Concentration** 50 µg/mL as determined by BCA

**Storage Buffer** 100 mM glycine, 25 mM Tris-HCl, pH 7.3.

## GENE INFORMATION

**Gene Name** [HOMER3 homer scaffold protein 3 \[ Homo sapiens \(human\) \]](#)

**Official Symbol** [HOMER3](#)

**Synonyms** HOMER3; homer homolog 3 (Drosophila); homer protein homolog 3; HOMER 3; Homer, neuronal immediate early gene, 3; VESL3; HOMER-3;

**Gene ID** [9454](#)

**mRNA Refseq** [NM\\_001145722](#)

**Protein Refseq** [NP\\_001139194](#)

 Tel: 1-631-559-9269 1-516-512-3133

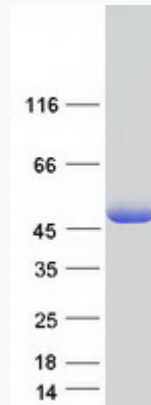
 Email: [info@creative-biomart.com](mailto:info@creative-biomart.com)  Fax: 1-631-938-8127

 45-1 Ramsey Road, Shirley, NY 11967, USA

**MIM** 604800

**UniProt ID** Q9NSC5

**SDS-PAGE**



 Tel: 1-631-559-9269 1-516-512-3133

 Email: [info@creative-biomart.com](mailto:info@creative-biomart.com)  Fax: 1-631-938-8127

 45-1 Ramsey Road, Shirley, NY 11967, USA