

Recombinant Human HORMAD1 protein, GST-tagged

Cat. No. HORMAD1-7867H Lot. No. (See product label)

SPECIFICATION

Product Overview	Recombinant Human HORMAD1 protein(1-394 aa), fused with N-terminal GST tag, was expressed in E. coli.
Species	Human
Source	E.coli
ProteinLength	1-394 aa
Tag	N-GST
Form	The purified protein was Lyophilized from sterile PBS (58mM Na ₂ HPO ₄ , 17mM NaH ₂ PO ₄ , 68mM NaCl, pH7.4). 5 % trehalose and 5 % mannitol are added as protectant before lyophilization.
Purity	85%, by SDS-PAGE with Coomassie Brilliant Blue staining.
Storage	Short-term storage: Store at 2-8°C for (1-2 weeks). Long-term storage: Aliquot and store at -20°C to -80°C for up to 3 months, reconstitution with sterile water and addition of an equal volume of glycerol. Avoid repeat freeze-thaw cycles.
Reconstitution	Reconstitute at 0.25 µg/µl in 200 µl sterile water for short-term storage. After reconstitution with sterile water, if glycerol has no effect on subsequent experiments, it is recommended to add an equal volume of glycerol for long-term storage.

 Tel: 1-631-559-9269 1-516-512-3133

 Email: info@creative-biomart.com  Fax: 1-631-938-8127

 45-1 Ramsey Road, Shirley, NY 11967, USA

AA Sequence

MATAQLQRTPMSALVFPNKISTEHQSLVLVKRLLAVSVSCITYLRGIFPECAYGTRYL
 DDLCVKILREDKNCPGSTQLVKWMLGICYDALQKKYLRMVVLAVYTNPEDPQTISEC
 YQFKFKYTNNGPLMDFISKNQSNESSMLSTDTKKASILLIRKIYILMQNLGPLPNDVCL
 TMKLFYYDEVTPPDYQPPGFKDGDCEGVIFEGEPMYLNVEVSTPFHIFKVKVTTTER
 ERMENIDSTILSPKQIKTPFQKILRDKDVEDEQEHYTSDDLDIETKMEEQEKNPASSE
 LEEPSLVCEEDEIMRSKESPDLSISHSQVEQLVNKTSELDMSESKTRSGKVFQNKMA
 NGNQPVKSSKENRKRSQHESGRIVLHHFDSSSQESVPKRRKFSEPKEHI

GENE INFORMATION

Gene Name [HORMAD1 HORMA domain containing 1 \[Homo sapiens \]](#)

Official Symbol [HORMAD1](#)

Synonyms HORMAD1; HORMA domain containing 1; HORMA domain-containing protein 1; cancer/testis antigen 46; CT46; DKFZP434A1315; newborn ovary HORMA protein; NOHMA; DKFZp434A1315;

Gene ID [84072](#)

mRNA Refseq [NM_001199829](#)

Protein Refseq [NP_001186758](#)

MIM [609824](#)

UniProt ID [Q86X24](#)

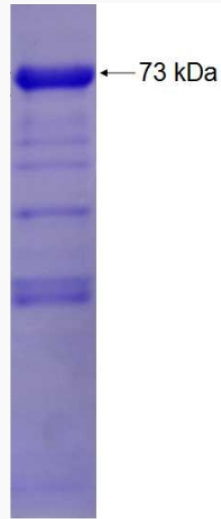
 Tel: 1-631-559-9269 1-516-512-3133

 Email: info@creative-biomart.com  Fax: 1-631-938-8127

 45-1 Ramsey Road, Shirley, NY 11967, USA



SDS-PAGE



Tel: 1-631-559-9269 1-516-512-3133

Email: info@creative-biomart.com Fax: 1-631-938-8127

45-1 Ramsey Road, Shirley, NY 11967, USA