

Recombinant Human HOXB1 Protein, Myc/DDK-tagged, C13 and N15-labeled

Cat. No. HOXB1-2272H Lot. No. (See product label)

SPECIFICATION

Product Overview	HOXB1 MS Standard C13 and N15-labeled recombinant protein (NP_002135) with a C-terminal MYC/DDK tag, was expressed in HEK293 cells.
Species	Human
Source	HEK293
Description	This gene belongs to the homeobox family of genes. The homeobox genes encode a highly conserved family of transcription factors that play an important role in morphogenesis in all multicellular organisms. Mammals possess four similar homeobox gene clusters, HOXA, HOXB, HOXC and HOXD, located on different chromosomes, consisting of 9 to 11 genes arranged in tandem. This gene is one of several homeobox HOXB genes located in a cluster on chromosome 17.
Molecular Mass	32 kDa
AA Sequence	MDYNRMNSFLEYPLCNRGPSAYS SAHSAPTSFPPSSAQAVDSYASEGRYGGGLSSP AFQQNSGYPAQQPPSTLGVFPFPSSAPSGYAPAACSPSYGPSQYYPLGQSEGDGGY FHPSSYGAQLGGLSDGYGAGGAGPGPYPPQHPPYGNEQTASFAPAYADLLSEDK TPCPSEPNTPTARTFDWMKVKNRPPKTAKVSEPLGLSPSGLRTNFTTRQLTELEKE FHFNKYLSRARRVEIAATLELNETQVKIWFQNRMMKQKKREREGRVPPAPPGCPK EAAGDASDQSTCTSPEASPSSVTSTRTRPLEQKLISEEDLAANDILDYKDDDDKV
Purity	> 80% as determined by SDS-PAGE and Coomassie blue staining

 Tel: 1-631-559-9269 1-516-512-3133

 Email: info@creative-biomart.com  Fax: 1-631-938-8127

 45-1 Ramsey Road, Shirley, NY 11967, USA

Stability	Stable for 3 months from receipt of products under proper storage and handling conditions.
Storage	Store at -80 centigrade. Avoid repeated freeze-thaw cycles.
Concentration	50 µg/mL as determined by BCA
Storage Buffer	100 mM glycine, 25 mM Tris-HCl, pH 7.3.

GENE INFORMATION

Gene Name	HOXB1 homeobox B1 [Homo sapiens (human)]
Official Symbol	HOXB1
Synonyms	HOXB1; homeobox B1; homeo box B1, HOX2, HOX2I; homeobox protein Hox-B1; homeo box 2I; homeo box B1; homeobox protein Hox-2I; HOX2; HOX2I; Hox-2.9; MGC116843; MGC116844; MGC116845;
Gene ID	3211
mRNA Refseq	NM_002144
Protein Refseq	NP_002135
MIM	142968
UniProt ID	P14653

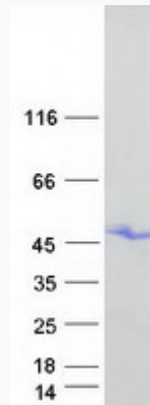
 Tel: 1-631-559-9269 1-516-512-3133

 Email: info@creative-biomart.com  Fax: 1-631-938-8127

 45-1 Ramsey Road, Shirley, NY 11967, USA



SDS-PAGE



Tel: 1-631-559-9269 1-516-512-3133

Email: info@creative-biomart.com Fax: 1-631-938-8127

45-1 Ramsey Road, Shirley, NY 11967, USA