

Recombinant Human HOXB1 Protein, GST-tagged

Cat. No. HOXB1-4953H Lot. No. (See product label)

SPECIFICATION

Product Overview	Human HOXB1 full-length ORF (AAH96192.1, 1 a.a. - 235 a.a.) recombinant protein with GST-tag at N-terminal.
Species	Human
Source	Wheat Germ
Description	This gene belongs to the homeobox family of genes. The homeobox genes encode a highly conserved family of transcription factors that play an important role in morphogenesis in all multicellular organisms. Mammals possess four similar homeobox gene clusters, HOXA, HOXB, HOXC and HOXD, located on different chromosomes, consisting of 9 to 11 genes arranged in tandem. This gene is one of several homeobox HOXB genes located in a cluster on chromosome 17. [provided by RefSeq]
Molecular Mass	51.4 kDa
AA Sequence	MDYNRMNSFLEYPLCNRGPSAYSASHSAHSAPTSFPPSSAQAVDSYASEGRYGGGL SSPAFQQNSGYPAQQPPSTLGVPFPSSAPSGYAPAACSPSYGPSQYYPLGHSEGD GGYFHPSSYGAQLGGLSDGYGAGGAGPGPYPPQHPPYGNEQTASFAPAYADLLSE DKETPCPSEPNTPTARTFDWMKVKRNPPTGRAQMWPPLLRGPKHLCFPCSDMS WVWAGFFSFSGSGRHR
Applications	Enzyme-linked Immunoabsorbent Assay Western Blot (Recombinant protein)

 Tel: 1-631-559-9269 1-516-512-3133

 Email: info@creative-biomart.com  Fax: 1-631-938-8127

 45-1 Ramsey Road, Shirley, NY 11967, USA

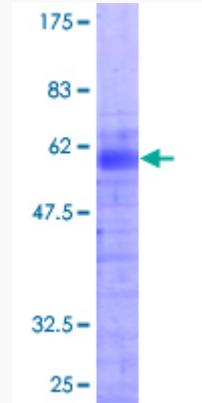
	Antibody Production Protein Array
Notes	Best use within three months from the date of receipt of this protein.
Storage	Store at -8 centigrade. Aliquot to avoid repeated freezing and thawing.
Storage Buffer	50 mM Tris-HCl, 10 mM reduced Glutathione, pH=8.0 in the elution buffer.
GENE INFORMATION	
Gene Name	HOXB1 homeobox B1 [Homo sapiens]
Official Symbol	HOXB1
Synonyms	HOXB1; homeobox B1; homeo box B1 , HOX2, HOX2I; homeobox protein Hox-B1; homeo box 2I; homeo box B1; homeobox protein Hox-2I; HOX2; HOX2I; Hox-2.9; MGC116843; MGC116844; MGC116845;
Gene ID	3211
mRNA Refseq	NM_002144
Protein Refseq	NP_002135
MIM	142968
UniProt ID	P14653

 Tel: 1-631-559-9269 1-516-512-3133

 Email: info@creative-biomart.com  Fax: 1-631-938-8127

 45-1 Ramsey Road, Shirley, NY 11967, USA

**Quality Control
Testing**



12.5% SDS-PAGE Stained with Coomassie Blue.

 Tel: 1-631-559-9269 1-516-512-3133

 Email: info@creative-biomart.com  Fax: 1-631-938-8127

 45-1 Ramsey Road, Shirley, NY 11967, USA