

Recombinant Human HOXB7 Protein, Myc/DDK-tagged, C13 and N15-labeled

Cat. No. HOXB7-1590H **Lot. No.** (See product label)

SPECIFICATION

Product Overview	HOXB7 MS Standard C13 and N15-labeled recombinant protein (NP_004493) with a C-terminal MYC/DDK tag, was expressed in HEK293 cells.
Species	Human
Source	HEK293
Description	This gene is a member of the Antp homeobox family and encodes a protein with a homeobox DNA-binding domain. It is included in a cluster of homeobox B genes located on chromosome 17. The encoded nuclear protein functions as a sequence-specific transcription factor that is involved in cell proliferation and differentiation. Increased expression of this gene is associated with some cases of melanoma and ovarian carcinoma.
Molecular Mass	24 kDa
AA Sequence	MSSLYYANALFSKYPASSSVFATGAFPEQTS CAFASNPQRPGYGAGSGASFAASM QGLYPGGGGMAGQSAAGVYAAGYGLEPSSFNMHCAPFEQNL SGVCPGDSAKAAG AKEQRDSDLAAESNFRIYPWMRSSGTD RKRGRQTYTRYQTLELEKEFHYNRYLTRR RRIEIAHTLCLTERQIKIWFQNR RMKWKKENKTAGPGTTGQDRAEAE EEEEEETRTRP LEQKLISEEDLAANDILDYKDDDDKV
Purity	> 80% as determined by SDS-PAGE and Coomassie blue staining

 Tel: 1-631-559-9269 1-516-512-3133

 Email: info@creative-biomart.com  Fax: 1-631-938-8127

 45-1 Ramsey Road, Shirley, NY 11967, USA

Stability	Stable for 3 months from receipt of products under proper storage and handling conditions.
Storage	Store at -80 centigrade. Avoid repeated freeze-thaw cycles.
Concentration	50 µg/mL as determined by BCA
Storage Buffer	100 mM glycine, 25 mM Tris-HCl, pH 7.3.

GENE INFORMATION

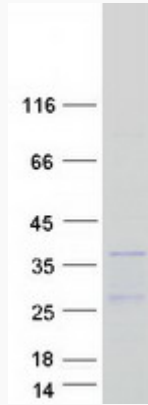
Gene Name	HOXB7 homeobox B7 [Homo sapiens (human)]
Official Symbol	HOXB7
Synonyms	HOXB7; homeobox B7; homeo box B7, HOX2, HOX2C; homeobox protein Hox-B7; homeo box 2C; homeo box B7; homeo box c1 protein; homeobox protein HHO.C1; homeobox protein Hox-2C; HOX2; HOX2C; HHO.C1; Hox-2.3;
Gene ID	3217
mRNA Refseq	NM_004502
Protein Refseq	NP_004493
MIM	142962
UniProt ID	P09629

 Tel: 1-631-559-9269 1-516-512-3133

 Email: info@creative-biomart.com  Fax: 1-631-938-8127

 45-1 Ramsey Road, Shirley, NY 11967, USA

SDS-PAGE



 Tel: 1-631-559-9269 1-516-512-3133

 Email: info@creative-biomart.com  Fax: 1-631-938-8127

 45-1 Ramsey Road, Shirley, NY 11967, USA