

Recombinant Human HOXC9 Protein, Myc/DDK-tagged, C13 and N15-labeled

Cat. No. HOXC9-1973H Lot. No. (See product label)

SPECIFICATION

Product Overview	HOXC9 MS Standard C13 and N15-labeled recombinant protein (NP_008828) with a C-terminal MYC/DDK tag, was expressed in HEK293 cells.
Species	Human
Source	HEK293
Description	This gene belongs to the homeobox family of genes. The homeobox genes encode a highly conserved family of transcription factors that play an important role in morphogenesis in all multicellular organisms. Mammals possess four similar homeobox gene clusters, HOXA, HOXB, HOXC and HOXD, which are located on different chromosomes and consist of 9 to 11 genes arranged in tandem. This gene is one of several homeobox HOXC genes located in a cluster on chromosome 12.
Molecular Mass	29.2 kDa
AA Sequence	MSATGPISNYYVDSLISHDNEDLLASRFPATGAHPAAARPSGLVPDCSDFPSCSFAP KPAVFSTSWAPVPSQSSVYHPYGPQPHLGADTRYMRTWLEPLSGAVSFPSFPAG GRHYALKPDAYPGRRADCGPGEGRSYPDYMYSYSPGELRDRAPQTLPSPEADALA GSKHKEEKADLDPSNPVANWIHARSTRKKRCPTYTKYQTLELEKEFLNMYLTRDRR YEVARVLNLTERQVKIWFQNRMMKMKMNKEKTDKEQSTRTRPLEQKLISEEDLAA NDILDYKDDDDKV
Purity	> 80% as determined by SDS-PAGE and Coomassie blue staining

 Tel: 1-631-559-9269 1-516-512-3133

 Email: info@creative-biomart.com  Fax: 1-631-938-8127

 45-1 Ramsey Road, Shirley, NY 11967, USA

Stability	Stable for 3 months from receipt of products under proper storage and handling conditions.
Storage	Store at -80 centigrade. Avoid repeated freeze-thaw cycles.
Concentration	50 µg/mL as determined by BCA
Storage Buffer	100 mM glycine, 25 mM Tris-HCl, pH 7.3.
GENE INFORMATION	
Gene Name	HOXC9 homeobox C9 [Homo sapiens (human)]
Official Symbol	HOXC9
Synonyms	HOXC9; homeobox C9; homeo box C9, HOX3, HOX3B; homeobox protein Hox-C9; homeo box C9; homeobox protein Hox-3B; HOX3; HOX3B;
Gene ID	3225
mRNA Refseq	NM_006897
Protein Refseq	NP_008828
MIM	142971
UniProt ID	P31274

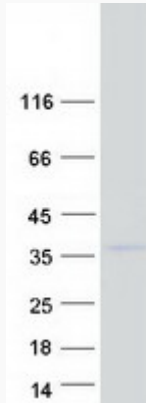
 Tel: 1-631-559-9269 1-516-512-3133

 Email: info@creative-biomart.com  Fax: 1-631-938-8127

 45-1 Ramsey Road, Shirley, NY 11967, USA



SDS-PAGE



Tel: 1-631-559-9269 1-516-512-3133

Email: info@creative-biomart.com Fax: 1-631-938-8127

45-1 Ramsey Road, Shirley, NY 11967, USA