

# Native Rabbit Hemoglobin

**Cat. No.** HP-146R    **Lot. No.** (See product label)

## SPECIFICATION

<b>Species</b>	Rabbit
<b>Source</b>	Rabbit Plasma
<b>ProteinLength</b>	Full length native Rabbit Hemoglobin
<b>Description</b>	Hemoglobin is involved in oxygen transport from the lung to the various peripheral tissues. The alpha (HBA) and beta (HBB) loci determine the structure of the 2 types of polypeptide chains in adult Hemoglobin. The normal adult Hemoglobin tetramer consists of two alpha chains and two beta chains. Mutant beta globin causes sickle cell anemia. Absence of beta chain causes beta zero thalassemia. Reduced amounts of detectable beta globin causes beta plus thalassemia.
<b>Form</b>	Liquid
<b>Purity</b>	>95% (SDS-PAGE)
<b>Applications</b>	Western blotting,ELISA,etc
<b>Storage</b>	Aliquot and store at -20°C or -80°C. Avoid repeated freeze / thaw cycles.
<b>Storage Buffer</b>	PBS

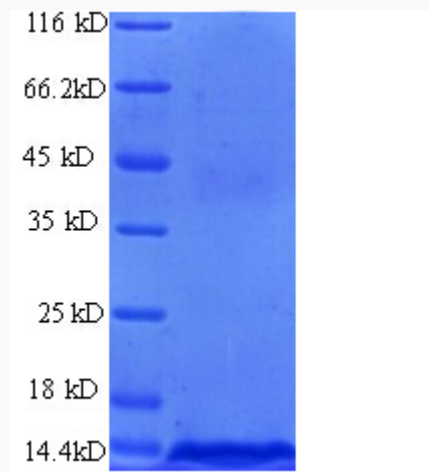
## GENE INFORMATION

 Tel: 1-631-559-9269    1-516-512-3133

 Email: [info@creative-biomart.com](mailto:info@creative-biomart.com)     Fax: 1-631-938-8127

 45-1 Ramsey Road, Shirley, NY 11967, USA

<b>Gene Name</b>	HP haptoglobin [ <i>Oryctolagus cuniculus</i> ]
<b>Official Symbol</b>	HP
<b>Synonyms</b>	HP; haptoglobin;
<b>Gene ID</b>	100008816
<b>mRNA Refseq</b>	NM_001082110
<b>Protein Refseq</b>	NP_001075579



 Tel: 1-631-559-9269 1-516-512-3133

 Email: [info@creative-biomart.com](mailto:info@creative-biomart.com)  Fax: 1-631-938-8127

 45-1 Ramsey Road, Shirley, NY 11967, USA