

Recombinant Full Length Human HP Protein, C-Flag-tagged

Cat. No. HP-820HFL Lot. No. (See product label)

SPECIFICATION

Product Overview	Recombinant Full Length Human HP Protein, fused to Flag-tag at C-terminus, was expressed in Mammalian cells.
Species	Human
Source	Mammalian Cells
Description	<p>This gene encodes a preproprotein, which is processed to yield both alpha and beta chains, which subsequently combine as a tetramer to produce haptoglobin. Haptoglobin functions to bind free plasma hemoglobin, which allows degradative enzymes to gain access to the hemoglobin, while at the same time preventing loss of iron through the kidneys and protecting the kidneys from damage by hemoglobin. Mutations in this gene and/or its regulatory regions cause ahaptoglobinemia or hypohaptoglobinemia. This gene has also been linked to diabetic nephropathy, the incidence of coronary artery disease in type 1 diabetes, Crohn's disease, inflammatory disease behavior, primary sclerosing cholangitis, susceptibility to idiopathic Parkinson's disease, and a reduced incidence of Plasmodium falciparum malaria. The protein encoded also exhibits antimicrobial activity against bacteria. A similar duplicated gene is located next to this gene on chromosome 16. Multiple transcript variants encoding different isoforms have been found for this gene.</p>
Form	25 mM Tris HCl, pH 7.3, 100 mM glycine, 10% glycerol.
Molecular Mass	43.3 kDa

 Tel: 1-631-559-9269 1-516-512-3133

 Email: info@creative-biomart.com  Fax: 1-631-938-8127

 45-1 Ramsey Road, Shirley, NY 11967, USA

AA Sequence

MSALGAVIALLLWGQLFAVDSGNDVTDIADDGCPKPPEIAHGYVEHSVRYQCKNYY
 KLRTEGDGVYTLND KKQWINKAVGDKLPECEADDGCPKPPEIAHGYVEHSVRYQC
 KNYKLRTEGDGVYTLNNEKQWINKAVGD KLPECEAVCGKPKNPANPVQRILGGH
 LDAKGSFPWQAKMVSHHNLTTGATLINEQWLLTTAKNLFLNHSE NATAKDIAPTLTL
 YVGKKQLVEIEKVVLHPNYSQVDIGLIKLKQKVSVNERVMPICLPSKDYAEVGRVGY
 VSGWGRNANFKFTDHLKYVMLPVADQDQCIRHYEGSTVPEKKTSPVGVQPILNE
 HTFCAGMSKYQEDT
 CYGDAGSAFAVHDLEEDTWYATGILSFDKSCAVAEYGVYVKVTSIQDWWQKTIAENT
 RTRPLEQKLISEEDLAANDILDYKDDDDKV

Purity > 80% as determined by SDS-PAGE and Coomassie blue staining.

Stability Stable for 12 months from the date of receipt of the product under proper storage and handling conditions. Avoid repeated freeze-thaw cycles.

Storage Store at -80 centigrade.

Concentration >50 ug/mL as determined by microplate BCA method.

Preparation Recombinant protein was captured through anti-DDK affinity column followed by conventional chromatography steps.

Protein Families Druggable Genome, Protease, Secreted Protein, Transmembrane

Full Length Full L.

GENE INFORMATION

Gene Name HP haptoglobin [Homo sapiens (human)]

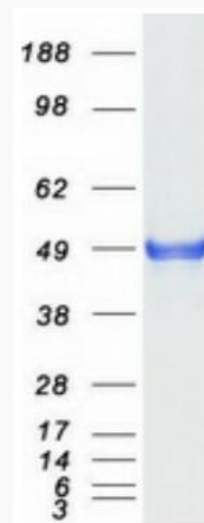
Official Symbol HP

 Tel: 1-631-559-9269 1-516-512-3133

 Email: info@creative-biomart.com  Fax: 1-631-938-8127

 45-1 Ramsey Road, Shirley, NY 11967, USA

Synonyms	BP; HPA1S; HP2ALPHA2
Gene ID	3240
mRNA Refseq	NM_005143.5
Protein Refseq	NP_005134.1
MIM	140100
UniProt ID	P00738



Coomassie blue staining of purified HP protein.

 Tel: 1-631-559-9269 1-516-512-3133

 Email: info@creative-biomart.com  Fax: 1-631-938-8127

 45-1 Ramsey Road, Shirley, NY 11967, USA