

Recombinant Human HPCA Protein, GST-tagged

Cat. No. HPCA-5003H Lot. No. (See product label)

SPECIFICATION

Product Overview	Human HPCA full-length ORF (NP_002134, 1 a.a. - 193 a.a.) recombinant protein with GST-tag at N-terminal.
Species	Human
Source	Wheat Germ
Description	The protein encoded by this gene is a member of neuron-specific calcium-binding proteins family found in the retina and brain. This protein is associated with the plasma membrane. It has similarities to proteins located in the photoreceptor cells that regulate photosignal transduction in a calcium-sensitive manner. This protein displays recoverin activity and a calcium-dependent inhibition of rhodopsin kinase. It is identical to the rat and mouse hippocalcin proteins and thought to play an important role in neurons of the central nervous system in a number of species. [provided by RefSeq]
Molecular Mass	46.86 kDa
AA Sequence	MGKQNSKLRPEMLQDLRENTFSELELQEWYKGLKDCPTGILNVDEFKKIYANFFP YGDASKFAEHVFRFTDNTSDGTIDFREFIILSVTSPGRLEQKLMWAFSMYDLDGNG YISREEMLEIVQAIYKMVSSVMKMPEDSTPEKRTEKIFRQMDTNNNDGKLSLEEFIRG AKSDPSIVRLLQCDPSSRSQF
Applications	Enzyme-linked Immunoabsorbent Assay Western Blot (Recombinant protein)

 Tel: 1-631-559-9269 1-516-512-3133

 Email: info@creative-biomart.com  Fax: 1-631-938-8127

 45-1 Ramsey Road, Shirley, NY 11967, USA

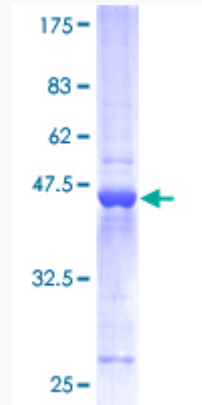
	Antibody Production Protein Array
Notes	Best use within three months from the date of receipt of this protein.
Storage	Store at -8 centigrade. Aliquot to avoid repeated freezing and thawing.
Storage Buffer	50 mM Tris-HCl, 10 mM reduced Glutathione, pH=8.0 in the elution buffer.
GENE INFORMATION	
Gene Name	HPCA hippocalcin [Homo sapiens]
Official Symbol	HPCA
Synonyms	HPCA; hippocalcin; neuron-specific calcium-binding protein hippocalcin; calcium-binding protein BDR-2; neuron specific calcium-binding protein hippocalcin; BDR2;
Gene ID	3208
mRNA Refseq	NM_002143
Protein Refseq	NP_002134
MIM	142622
UniProt ID	P84074

 Tel: 1-631-559-9269 1-516-512-3133

 Email: info@creative-biomart.com  Fax: 1-631-938-8127

 45-1 Ramsey Road, Shirley, NY 11967, USA

**Quality Control
Testing**



12.5% SDS-PAGE Stained with Coomassie Blue.

 Tel: 1-631-559-9269 1-516-512-3133

 Email: info@creative-biomart.com  Fax: 1-631-938-8127

 45-1 Ramsey Road, Shirley, NY 11967, USA