

Recombinant Human HPGD Protein, GST-tagged

Cat. No. HPGD-43H Lot. No. (See product label)

SPECIFICATION

Product Overview	Recombinant human HPGD(1-266) protein with a N-terminal GST-tag was expressed in E. coli.
Species	Human
Source	E.coli
ProteinLength	1-266
Description	This gene encodes a member of the short-chain nonmetalloenzyme alcohol dehydrogenase protein family. The encoded enzyme is responsible for the metabolism of prostaglandins, which function in a variety of physiologic and cellular processes such as inflammation. Mutations in this gene result in primary autosomal recessive hypertrophic osteoarthropathy and craniosteoarthropathy. Multiple transcript variants encoding different isoforms have been found for this gene.
Molecular Mass	55 kDa
Purity	≥90% estimated by SDS-PAGE
Unit Definition	One unit is defined as the amount of enzyme required to produce 1 nmol of NADH per minute at 37 centigrade in 50 mM Tris-HCl, pH 7.5, 0.1 mM DTT, 50 μM PGE2, and 1 mM NAD ⁺ .
Stability	≥ 6 months

 Tel: 1-631-559-9269 1-516-512-3133

 Email: info@creative-biomart.com  Fax: 1-631-938-8127

 45-1 Ramsey Road, Shirley, NY 11967, USA

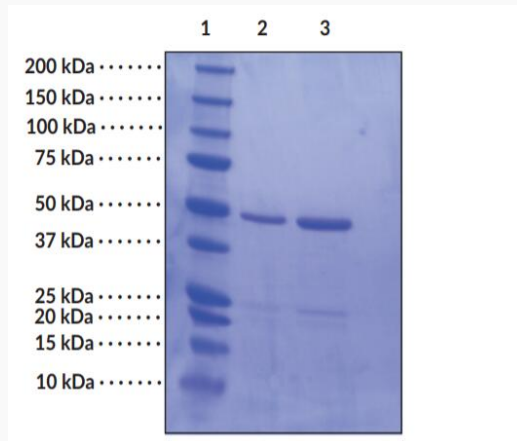
Storage	Store it at -80 centigrade
Storage Buffer	50 mM Tris-HCl, pH 7.5, containing 1 mM EDTA, 1 mM DTT, and 30% glycerol
GENE INFORMATION	
Gene Name	HPGD 15-hydroxyprostaglandin dehydrogenase [Homo sapiens (human)]
Official Symbol	HPGD
Synonyms	HPGD; 15-hydroxyprostaglandin dehydrogenase; PGDH; PGDH1; PHOAR1; 15-PGDH; SDR36C1; 15-hydroxyprostaglandin dehydrogenase [NAD(+)]; 15-hydroxyprostaglandin dehydrogenase (NAD(+)); NAD+-dependent 15-hydroxyprostaglandin dehydrogenase; hydroxyprostaglandin dehydrogenase 15-(NAD); prostaglandin dehydrogenase 1; short chain dehydrogenase/reductase family 36C member 1
Gene ID	3248
mRNA Refseq	NM_000860
Protein Refseq	NP_000851
MIM	601688
UniProt ID	P15428

 Tel: 1-631-559-9269 1-516-512-3133

 Email: info@creative-biomart.com  Fax: 1-631-938-8127

 45-1 Ramsey Road, Shirley, NY 11967, USA

**SDS-PAGE Analysis
of HPGD**



Lane 1: MW Markers; Lane 2: 15-hydroxy PGDH (2 μ g); Lane 3: 15-hydroxy PGDH (4 μ g). Representative gel image shown; actual purity may vary between each batch.

 Tel: 1-631-559-9269 1-516-512-3133

 Email: info@creative-biomart.com  Fax: 1-631-938-8127

 45-1 Ramsey Road, Shirley, NY 11967, USA