

Active Recombinant Human HPGD protein, His-tagged

Cat. No. HPGD-881H Lot. No. (See product label)

SPECIFICATION

Product Overview	Active Recombinant Human HPGD protein(NP_000851.2) (Met 1-Gln 266) was expressed in E. coli, with a polyhistidine tag at the C-terminus.
Species	Human
Source	E. coli
ProteinLength	1-266 aa
Form	Lyophilized from sterile 50mM Tris, 100mM NaCl, 0.5mM DTT, 10% glycerol, pH 7.5.
Bio-activity	Measure by the production of NADH during the oxidation of PGF2 α . The specific activity is >1,500 pmoles/min/ μ g.
Molecular Mass	The recombinant human HPGD comprises 272 amino acids and has a predicted molecular mass of 29.7 kDa. It migrates as an approximately 27 kDa band in SDS-PAGE under reducing conditions.
Purity	> 92 % as determined by SDS-PAGE
Storage	Store it under sterile conditions at -20°C to -80°C upon receiving. Recommend to aliquot the protein into smaller quantities for optimal storage. Avoid repeated freeze-thaw cycles.
Reconstitution	It is recommended that sterile water be added to the vial to prepare a stock solution of

 Tel: 1-631-559-9269 1-516-512-3133

 Email: info@creative-biomart.com  Fax: 1-631-938-8127

 45-1 Ramsey Road, Shirley, NY 11967, USA

0.2 ug/ul. Centrifuge the vial at 4°C before opening to recover the entire contents.

protein Refseq-Weblink http://www.ncbi.nlm.nih.gov/protein/NP_000851.2

Unit ID P15428

Unit ID-Weblink <https://www.uniprot.org/uniprotkb/P15428>

GENE INFORMATION

Gene Name [HPGD hydroxyprostaglandin dehydrogenase 15-\(NAD\) \[Homo sapiens \]](#)

Official Symbol [HPGD](#)

Synonyms HPGD; hydroxyprostaglandin dehydrogenase 15-(NAD); 15-hydroxyprostaglandin dehydrogenase [NAD(+)]; SDR36C1; short chain dehydrogenase/reductase family 36C; member 1; prostaglandin dehydrogenase 1; NAD+-dependent 15-hydroxyprostaglandin dehydrogenase; short chain dehydrogenase/reductase family 36C, member 1; PGDH; PGDH1; PHOAR1; 15-PGDH;

Gene ID [3248](#)

mRNA Refseq [NM_000860](#)

protein Refseq [NP_000851](#)

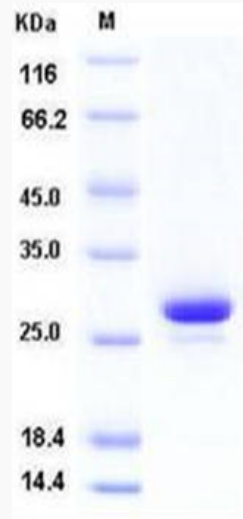
MIM [601688](#)

 Tel: 1-631-559-9269 1-516-512-3133

 Email: info@creative-biomart.com  Fax: 1-631-938-8127

 45-1 Ramsey Road, Shirley, NY 11967, USA

SDS-PAGE



 Tel: 1-631-559-9269 1-516-512-3133

 Email: info@creative-biomart.com  Fax: 1-631-938-8127

 45-1 Ramsey Road, Shirley, NY 11967, USA