

Recombinant Human HPGDS Protein, His-tagged

Cat. No. HPGDS-55H Lot. No. (See product label)

SPECIFICATION

Product Overview	Recombinant human HPGDS protein with a N-terminal His-tag was expressed in E. coli.
Species	Human
Source	E.coli
Description	Prostaglandin-D synthase is a sigma class glutathione-S-transferase family member. The enzyme catalyzes the conversion of PGH ₂ to PGD ₂ and plays a role in the production of prostanoids in the immune system and mast cells. The presence of this enzyme can be used to identify the differentiation stage of human megakaryocytes.
Molecular Mass	24.3 kDa
Purity	≥95% estimated by SDS-PAGE
Unit Definition	One unit of enzyme produces 1 μmole of PGD ₂ per minute at 25 centigrade in 100 mM Tris-HCl, pH 8.0, 1 mM GSH, 1 mM magnesium chloride and 40 μM PGH ₂ .
Stability	≥ 1 year
Storage	Store it at -80 centigrade
Storage Buffer	50 mM sodium phosphate, pH 7.2, containing 20% glycerol, 100 mM sodium chloride, 1 mM DTT, and 0.5 mM EDTA

 Tel: 1-631-559-9269 1-516-512-3133

 Email: info@creative-biomart.com  Fax: 1-631-938-8127

 45-1 Ramsey Road, Shirley, NY 11967, USA

GENE INFORMATION

Gene Name HPGDS hematopoietic prostaglandin D synthase [Homo sapiens (human)]

Official Symbol HPGDS

Synonyms HPGDS; hematopoietic prostaglandin D synthase; GSTS; PGD2; PGDS; GSTS1; GSTS1-1; hematopoietic prostaglandin D synthase; GST class-sigma; epididymis secretory sperm binding protein; glutathione S-transferase sigma; glutathione-dependent PGD synthase; glutathione-dependent PGD synthetase; glutathione-requiring prostaglandin D synthase; hematopoietic prostaglandin D2 synthase; prostaglandin-H2 D-isomerase

Gene ID 27306

mRNA Refseq NM_014485

Protein Refseq NP_055300

MIM 602598

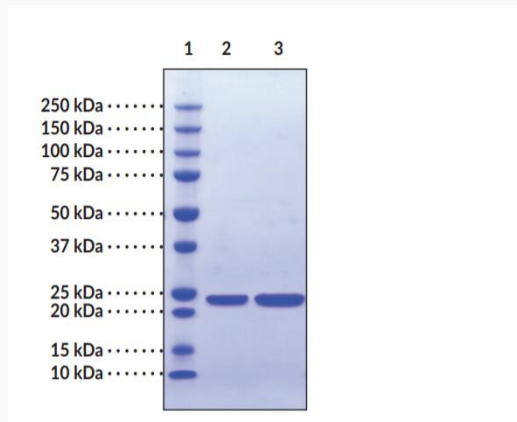
UniProt ID O60760

 Tel: 1-631-559-9269 1-516-512-3133

 Email: info@creative-biomart.com  Fax: 1-631-938-8127

 45-1 Ramsey Road, Shirley, NY 11967, USA

SDS-PAGE Analysis of HPGDS



Lane 1: MW Markers; Lane 2: hH-PGDS (2 μ g); Lane 3: hH-PGDS (4 μ g).
Representative gel image shown; actual purity may vary between each batch.

 Tel: 1-631-559-9269 1-516-512-3133

 Email: info@creative-biomart.com  Fax: 1-631-938-8127

 45-1 Ramsey Road, Shirley, NY 11967, USA