

Active Recombinant Human HPN Protein, His-tagged

Cat. No. HPN-148H Lot. No. (See product label)

SPECIFICATION

Product Overview	Recombinant Human HPN Protein(P05981)(Arg45-Leu417), fused with His tag, was expressed in HEK293.
Species	Human
Source	HEK293
ProteinLength	Arg45-Leu417
Form	Lyophilized from 0.22µm filtered solution in 20mM NaAc,150mM NaCl (pH 5.0). Normally 8% trehalose is added as protectant before lyophilization.
Bio-activity	Immobilized Human HPN, His Tag at 2µg/ml (100µl/Well) on the plate. Dose response curve for Anti-HPN Antibody, hFc Tag with the EC50 of 20.0ng/ml determined by ELISA.
Molecular Mass	The protein has a predicted MW of 42 kDa. Due to the protein cleaved into the following two chains, so it migrates to 18-22 kDa and 30 kDa based on Tris-Bis PAGE result.
Endotoxin	Less than 1EU per µg by the LAL method.
Purity	> 95% as determined by Tris-Bis PAGE > 95% as determined by HPLC

 Tel: 1-631-559-9269 1-516-512-3133

 Email: info@creative-biomart.com  Fax: 1-631-938-8127

 45-1 Ramsey Road, Shirley, NY 11967, USA

Storage

-20 to -80°C for 12 months as supplied from date of receipt.
 -20 to -80°C for 3-6 months in unopened state after reconstitution.
 2-8°C for 2-7 days after reconstitution.
 Recommend to aliquot the protein into smaller quantities for optimal storage. Please avoid freeze-thaw cycles.

Reconstitution

Centrifuge tubes before opening. Reconstituting to a concentration more than 100 µg/ml is recommended. Dissolve the lyophilized protein in 20mM NaAc, 150mM NaCl (pH 5.0).

GENE INFORMATION

Gene Name [HPN hepsin \[Homo sapiens \]](#)

Official Symbol [HPN](#)

Synonyms HPN; hepsin; serine protease hepsin; TMPRSS1; transmembrane protease; serine 1; transmembrane protease serine 1; transmembrane protease, serine 1; serine protease hepsin catalytic chain; serine protease hepsin non-catalytic chain;

Gene ID [3249](#)

mRNA Refseq [NM_002151](#)

Protein Refseq [NP_002142](#)

MIM [142440](#)

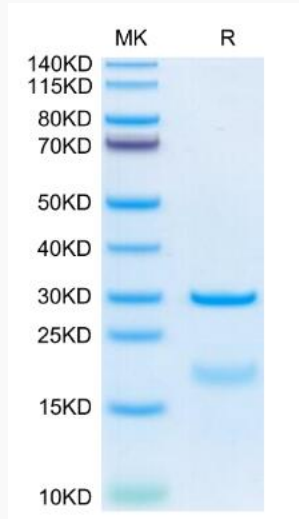
UniProt ID [P05981](#)

 Tel: 1-631-559-9269 1-516-512-3133

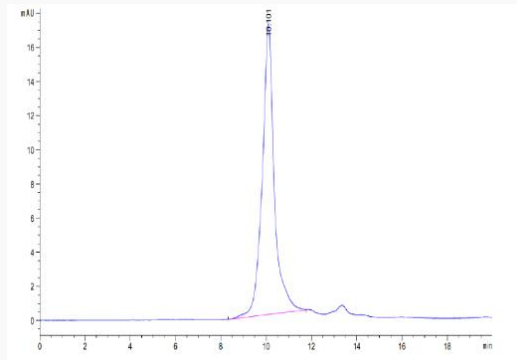
 Email: info@creative-biomart.com  Fax: 1-631-938-8127

 45-1 Ramsey Road, Shirley, NY 11967, USA

Tris-Bis PAGE



SEC-HPLC

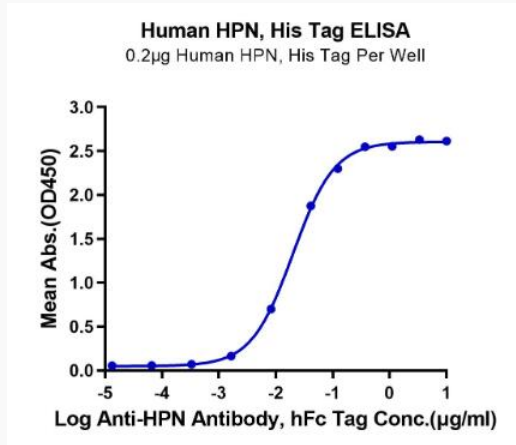


 Tel: 1-631-559-9269 1-516-512-3133

 Email: info@creative-biomart.com  Fax: 1-631-938-8127

 45-1 Ramsey Road, Shirley, NY 11967, USA

ELISA Data



 Tel: 1-631-559-9269 1-516-512-3133

 Email: info@creative-biomart.com  Fax: 1-631-938-8127

 45-1 Ramsey Road, Shirley, NY 11967, USA