

## Recombinant Human HPN Protein, GST-tagged

**Cat. No.** HPN-5010H    **Lot. No.** (See product label)

### SPECIFICATION

<b>Product Overview</b>	Human HPN full-length ORF ( AAH25716.1, 40 a.a. - 417 a.a.) recombinant protein with GST-tag at N-terminal.
<b>Species</b>	Human
<b>Source</b>	Wheat Germ
<b>Description</b>	This gene encodes a type II transmembrane serine protease. The encoded protein has an extracellular region that consists of two domains, a catalytic serine protease domain and a non-catalytic scavenger receptor cysteine-rich domain. This protein may be involved in diverse cellular functions including blood coagulation, maintenance of cell morphology and the growth and progression of certain cancers, particularly prostate cancer. Alternative splicing results in multiple transcript variants
<b>Molecular Mass</b>	67.43 kDa
<b>AA Sequence</b>	VAVLLRSDQEPLYPVQVSSADARLMVFDKTEGTWRLLCSSRSNARVAGLSCEEMG FLRALTHSELDVRTAGANGTSGFFCVDEGRLPHTQRLLVISVDCDCPRGRFLAAICQ DCGRRKLPVDRIVGGRDTSLGRWPWQVSLRYDGAHLCCGSLLSGDWVLTAAHCF PERNRVLSRWRVFAGAVAQASPHGLQLGVQAVVYHGGYLPFRDPNSEENSNDIAL VHLSSPLPLTEYIQPVCLPAAGQALVDGKICTVTGWGNTQYYGQQAGVLQEARVPII SNDVCNGADFYGNQIKPKMFCAGYPEGGIDACQGDSSGGPFACEDSISRTPRWRLC GIVSWGTCALAQKPGVYTKVSDFREWIFQAIKTHSEASGMVTQL
<b>Applications</b>	Enzyme-linked Immunoabsorbent Assay

 Tel: 1-631-559-9269    1-516-512-3133

 Email: [info@creative-biomart.com](mailto:info@creative-biomart.com)     Fax: 1-631-938-8127

 45-1 Ramsey Road, Shirley, NY 11967, USA

Western Blot (Recombinant protein)  
 Antibody Production  
 Protein Array

**Notes** Best use within three months from the date of receipt of this protein.

**Storage** Store at -8 centigrade. Aliquot to avoid repeated freezing and thawing.

**Storage Buffer** 50 mM Tris-HCl, 10 mM reduced Glutathione, pH=8.0 in the elution buffer.

## GENE INFORMATION

**Gene Name** [HPN hepsin \[ Homo sapiens \]](#)

**Official Symbol** [HPN](#)

**Synonyms** HPN; hepsin; serine protease hepsin; TMPRSS1; transmembrane protease; serine 1; transmembrane protease serine 1; transmembrane protease, serine 1; serine protease hepsin catalytic chain; serine protease hepsin non-catalytic chain;

**Gene ID** [3249](#)

**mRNA Refseq** [NM\\_002151](#)

**Protein Refseq** [NP\\_002142](#)

**MIM** [142440](#)

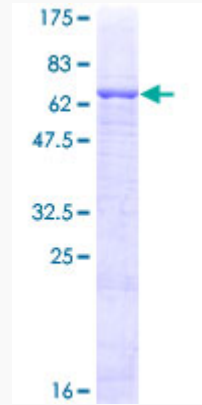
**UniProt ID** [P05981](#)

 Tel: 1-631-559-9269 1-516-512-3133

 Email: [info@creative-biomart.com](mailto:info@creative-biomart.com)  Fax: 1-631-938-8127

 45-1 Ramsey Road, Shirley, NY 11967, USA

**Quality Control  
Testing**



12.5% SDS-PAGE Stained with Coomassie Blue.

 Tel: 1-631-559-9269 1-516-512-3133

 Email: [info@creative-biomart.com](mailto:info@creative-biomart.com)  Fax: 1-631-938-8127

 45-1 Ramsey Road, Shirley, NY 11967, USA