

## Recombinant Human HPS6 Protein, GST-tagged

**Cat. No.** HPS6-5018H    **Lot. No.** (See product label)

### SPECIFICATION

<b>Product Overview</b>	Human HPS6 partial ORF ( NP_079023, 400 a.a. - 500 a.a.) recombinant protein with GST-tag at N-terminal.
<b>Species</b>	Human
<b>Source</b>	Wheat Germ
<b>Description</b>	This intronless gene encodes a protein that may play a role in organelle biogenesis associated with melanosomes, platelet dense granules, and lysosomes. This protein interacts with Hermansky-Pudlak syndrome 5 protein. Mutations in this gene are associated with Hermansky-Pudlak syndrome type 6. [provided by RefSeq
<b>Molecular Mass</b>	36.85 kDa
<b>AA Sequence</b>	KDLVFEEACGYQRRSLRGAQLTPEELRHSSTFRAPQALASILQGHLPPSALLTMLR TELRDYRGLEQLKAQLVAGDDEEAGWTELAEQEVARLLRTELIG
<b>Applications</b>	Enzyme-linked Immunoabsorbent Assay Western Blot (Recombinant protein) Antibody Production Protein Array
<b>Notes</b>	Best use within three months from the date of receipt of this protein.
<b>Storage</b>	Store at -8 centigrade. Aliquot to avoid repeated freezing and thawing.

 Tel: 1-631-559-9269    1-516-512-3133

 Email: [info@creative-biomart.com](mailto:info@creative-biomart.com)     Fax: 1-631-938-8127

 45-1 Ramsey Road, Shirley, NY 11967, USA

**Storage Buffer** 50 mM Tris-HCl, 10 mM reduced Glutathione, pH=8.0 in the elution buffer.

## GENE INFORMATION

**Gene Name** HPS6 Hermansky-Pudlak syndrome 6 [ Homo sapiens ]

**Official Symbol** HPS6

**Synonyms** HPS6; Hermansky-Pudlak syndrome 6; Hermansky-Pudlak syndrome 6 protein; FLJ22501; ruby-eye protein homolog; Hermansky-Pudlak syndrome-6 protein (HPS6); MGC20522; RP11-302K17.1;

**Gene ID** 79803

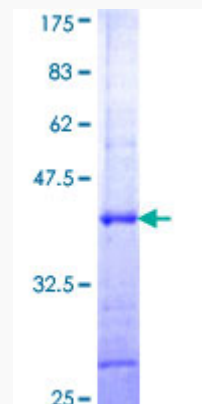
**mRNA Refseq** NM\_024747

**Protein Refseq** NP\_079023

**MIM** 607522

**UniProt ID** Q86YV9

**Quality Control Testing**



 Tel: 1-631-559-9269 1-516-512-3133

 Email: [info@creative-biomart.com](mailto:info@creative-biomart.com)  Fax: 1-631-938-8127

 45-1 Ramsey Road, Shirley, NY 11967, USA



12.5% SDS-PAGE Stained with Coomassie Blue.

 Tel: 1-631-559-9269 1-516-512-3133

 Email: [info@creative-biomart.com](mailto:info@creative-biomart.com)  Fax: 1-631-938-8127

 45-1 Ramsey Road, Shirley, NY 11967, USA