

Recombinant Human HPSE Protein, His-tagged

Cat. No. HPSE-2251H Lot. No. (See product label)

SPECIFICATION

Product Overview	Recombinant Human HPSE Protein (Pro400-Ile543) with a N-His tag was expressed in E. coli.
Species	Human
Source	E.coli
ProteinLength	Pro400-Ile543
Description	Heparan sulfate proteoglycans are major components of the basement membrane and extracellular matrix. The protein encoded by this gene is an enzyme that cleaves heparan sulfate proteoglycans to permit cell movement through remodeling of the extracellular matrix. In addition, this cleavage can release bioactive molecules from the extracellular matrix. Several transcript variants encoding different isoforms have been found for this gene.
Form	Freeze-dried powder
Molecular Mass	Predicted Molecular Mass: 17.6 kDa Accurate Molecular Mass: 20 kDa
Endotoxin	<1.0 EU per 1g (determined by the LAL method).
Purity	> 97%

 Tel: 1-631-559-9269 1-516-512-3133

 Email: info@creative-biomart.com  Fax: 1-631-938-8127

 45-1 Ramsey Road, Shirley, NY 11967, USA

Applications	Cell culture; Activity Assays.
Stability	The thermal stability is described by the loss rate. The loss rate was determined by accelerated thermal degradation test, that is, incubate the protein at 37 centigrade for 48h, and no obvious degradation and precipitation were observed. The loss rate is less than 5% within the expiration date under appropriate storage condition.
Storage	Avoid repeated freeze/thaw cycles. Store at 2-8 centigrade for one month. Aliquot and store at -80 centigrade for 12 months.
Storage Buffer	20mM Tris, 150mM NaCl, pH8.0, containing 1mM EDTA, 1mM DTT, 0.01% SKL, 5% Trehalose and Proclin300.
Reconstitution	Reconstitute in 20mM Tris, 150mM NaCl (pH8.0) to a concentration of 0.1-1.0 mg/mL. Do not vortex.

GENE INFORMATION

Gene Name	HPSE heparanase [<i>Homo sapiens</i> (human)]
Official Symbol	HPSE
Synonyms	HPSE; heparanase; HPA; HPSE1; HSE1; heparanase-1; endo-glucuronidase; HPA1; HPR1;
Gene ID	10855
mRNA Refseq	NM_006665
Protein Refseq	NP_006656

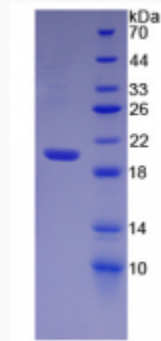
 Tel: 1-631-559-9269 1-516-512-3133

 Email: info@creative-biomart.com  Fax: 1-631-938-8127

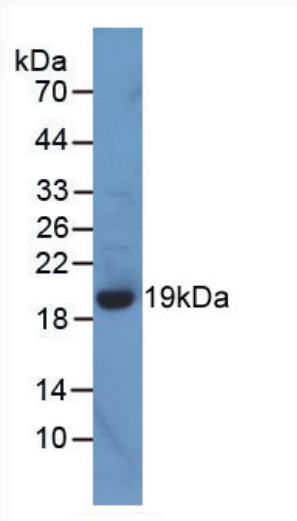
 45-1 Ramsey Road, Shirley, NY 11967, USA

MIM 604724

UniProt ID Q9Y251



WB

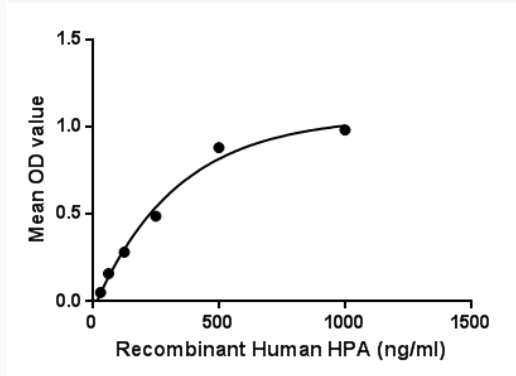


 Tel: 1-631-559-9269 1-516-512-3133


 Email: info@creative-biomart.com  Fax: 1-631-938-8127

 45-1 Ramsey Road, Shirley, NY 11967, USA

Bioactivity



Binding activity

 Tel: 1-631-559-9269 1-516-512-3133

 Email: info@creative-biomart.com  Fax: 1-631-938-8127

 45-1 Ramsey Road, Shirley, NY 11967, USA