

Recombinant Human HPSE Protein, GST-tagged

Cat. No. HPSE-5019H Lot. No. (See product label)

SPECIFICATION

Product Overview	Human HPSE partial ORF (NP_006656.1, 72 a.a. - 170 a.a.) recombinant protein with GST-tag at N-terminal.
Species	Human
Source	Wheat Germ
Description	Heparan sulfate proteoglycans are major components of the basement membrane and extracellular matrix. The protein encoded by this gene is an enzyme that cleaves heparan sulfate proteoglycans to permit cell movement through remodeling of the extracellular matrix. In addition, this cleavage can release bioactive molecules from the extracellular matrix. Several transcript variants encoding different isoforms have been found for this gene. [provided by RefSeq, Sep 2011]
Molecular Mass	36.63 kDa
AA Sequence	LILLGSPKLRTLARGLSPAYLRFGGTKTDFLIFDPKKESTFEERSYWQSQVNQDICKY GSIPPDVEEKLRLEWPYQEQLLLREHYQKKFKNSTYSRSSV
Applications	Enzyme-linked Immunoabsorbent Assay Western Blot (Recombinant protein) Antibody Production Protein Array
Notes	Best use within three months from the date of receipt of this protein.

 Tel: 1-631-559-9269 1-516-512-3133

 Email: info@creative-biomart.com  Fax: 1-631-938-8127

 45-1 Ramsey Road, Shirley, NY 11967, USA

Storage Store at -8 centigrade. Aliquot to avoid repeated freezing and thawing.

Storage Buffer 50 mM Tris-HCl, 10 mM reduced Glutathione, pH=8.0 in the elution buffer.

GENE INFORMATION

Gene Name HPSE heparanase [Homo sapiens]

Official Symbol HPSE

Synonyms HPSE; heparanase; HPA; HPSE1; HSE1; heparanase-1; endo-glucuronidase; HPA1; HPR1;

Gene ID 10855

mRNA Refseq NM_006665

Protein Refseq NP_006656

MIM 604724

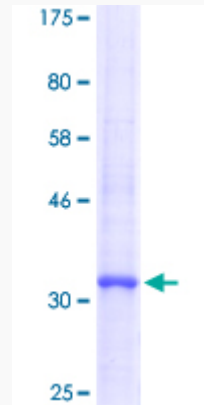
UniProt ID Q9Y251

 Tel: 1-631-559-9269 1-516-512-3133

 Email: info@creative-biomart.com  Fax: 1-631-938-8127

 45-1 Ramsey Road, Shirley, NY 11967, USA

**Quality Control
Testing**



12.5% SDS-PAGE Stained with Coomassie Blue.

 Tel: 1-631-559-9269 1-516-512-3133

 Email: info@creative-biomart.com  Fax: 1-631-938-8127

 45-1 Ramsey Road, Shirley, NY 11967, USA