

Recombinant HPV16 L1 Protein, His tagged

Cat. No. HPV16-L1-10H Lot. No. (See product label)

SPECIFICATION

Product Overview	Recombinant HPV16 L1 Protein with His tag was expressed in Baculovirus-Insect Cells.
Species	HPV16
Source	Insect Cells
Molecular Mass	The protein has a calculated MW of 57 kDa.
AA Sequence	MHHHHHSLWLPSEATVYLPPVPVSKVVSTDEYVARTNIYYHAGTSRLLAVGHPYF PIKKPNNKILVPKVSGLQYRVFRIHLPDPNKFQFPDTSFYNPDTQRLVWACVGVEV GRGQPLGVGISGHPLLNLDDTENASAYAANAGVDNRECISMDYKQTQLCLIGCKP PIGEHWGKGSPTNVAVNPGDCPPLELINTVIQDGMVDTGFGAMDFTTLQANKSE VPLDICTSICKYPDYIKMVSEPYGDSLFFYLRRQMFVRHLFN RAGTVGENVPDDLVI KSGSTANLASSNYFPTPSGSMVTSDAQIFNKPYWLQRAQGHNNGICWGNQLFVT VVDTRSTNMSLCAAISTSETTYKNTNFKEYLRHGEEYDLQFIFQLCKITLTADVMTYI HSMNSTILEDWNFGLQPPPGGTLEDTYRFVTSQAIACQKHTPPAPKEDPLKKYTFW EVNLKEKFSADLDQFPLGRKFLQAGLKAKPKFTLGKRKATPTTSSTSTTAKRKKRK L
Purity	> 90% by SDS-PAGE
Storage	Store it under sterile conditions at -20 to -80 centigrade. It is recommended that the protein be aliquoted for optimal storage. Avoid repeated freeze-thaw cycles.

 Tel: 1-631-559-9269 1-516-512-3133

 Email: info@creative-biomart.com  Fax: 1-631-938-8127

 45-1 Ramsey Road, Shirley, NY 11967, USA

Concentration 0.16 mg/mL by BCA

Storage Buffer Sterile 50 mM Tris, 200 mM NaCl, 0.1% SKL, pH 7.5

GENE INFORMATION

Gene Name L1 major capsid protein L1 [Human papillomavirus type 16]

Official Symbol L1

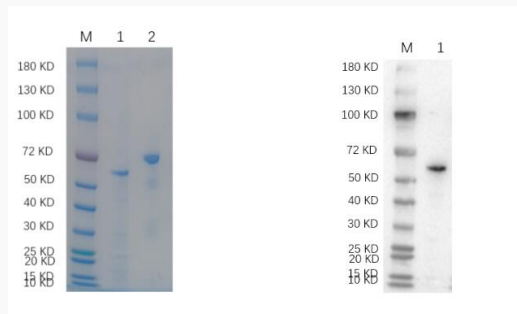
Synonyms L1; major capsid protein L1

Gene ID 1489082

Protein Refseq NP_041332

UniProt ID P03101

Reducing 12% SDS-PAGE (CBB stained) and WB (Anti-His Mouse Monoclonal Antibody) analysis profiles of purified HPV16-L1



1. HPV16-L1
2. BSA

Tel: 1-631-559-9269 1-516-512-3133

Email: info@creative-biomart.com Fax: 1-631-938-8127

45-1 Ramsey Road, Shirley, NY 11967, USA