

Recombinant Human HPX Protein, Myc/DDK-tagged, C13 and N15-labeled

Cat. No. HPX-5484H **Lot. No.** (See product label)

SPECIFICATION

Product Overview	HPX MS Standard C13 and N15-labeled recombinant protein (NP_000604) with a C-terminal MYC/DDK tag, was expressed in HEK293 cells.
Species	Human
Source	HEK293
Description	This gene encodes a plasma glycoprotein that binds heme with high affinity. The encoded protein is an acute phase protein that transports heme from the plasma to the liver and may be involved in protecting cells from oxidative stress.
Molecular Mass	51.68 kDa
AA Sequence	MARVLGAPVALGLWSLCWSLAIATPLPPTSAHGNVAEGETKPDVTERCSDGWS FDATTLDDNGTMLFFKGEFVWKSHKWDRELISERWKNFSPVDAAFRQGHNSVFLI KGDKVWVYPPEKKEKGYPKLLQDEFPGIPSPLDAAVECHRGECAEGVLFFQGDR EWFWDLATGTMKERSWPAVGNCSALRWLGRYYCFQGNQFLRFDVVRGEVPPRY PRDVRDYFMPCPGRGHGHRNGTGHGNSTHHGPEYMRCSPHLVLSALTSDNHGAT YAFSGTHYWRLDTSRDGWHSWPIAHQWPQGSAVDAAFSWEEKLYLVQGTQVYV FLTGGYTLVSGYPKRLEKEVGTPHGIILDSVDAAFICPGSSRLHIMAGRRLWWLDLK SGAQATWTELPWPHEKVDGALCMEKSLGPNSCSANGPGLYLIHGPNLYCYSDVEK LNAAKALPQPQNVTSLGCTHTRTRPLEQKLISEEDLAANDILDYKDDDDKV
Purity	> 80% as determined by SDS-PAGE and Coomassie blue staining

 Tel: 1-631-559-9269 1-516-512-3133

 Email: info@creative-biomart.com  Fax: 1-631-938-8127

 45-1 Ramsey Road, Shirley, NY 11967, USA

Stability	Stable for 3 months from receipt of products under proper storage and handling conditions.
Storage	Store at -80 centigrade. Avoid repeated freeze-thaw cycles.
Concentration	50 µg/mL as determined by BCA
Storage Buffer	100 mM glycine, 25 mM Tris-HCl, pH 7.3.

GENE INFORMATION

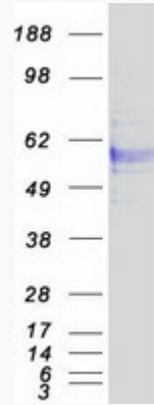
Gene Name	HPX hemopexin [Homo sapiens (human)]
Official Symbol	HPX
Synonyms	HPX; hemopexin; beta-1B-glycoprotein; HX; FLJ56652;
Gene ID	3263
mRNA Refseq	NM_000613
Protein Refseq	NP_000604
MIM	142290
UniProt ID	P02790

 Tel: 1-631-559-9269 1-516-512-3133

 Email: info@creative-biomart.com  Fax: 1-631-938-8127

 45-1 Ramsey Road, Shirley, NY 11967, USA

SDS-PAGE



 Tel: 1-631-559-9269 1-516-512-3133

 Email: info@creative-biomart.com  Fax: 1-631-938-8127

 45-1 Ramsey Road, Shirley, NY 11967, USA