

# Recombinant Human HRAS Protein, Myc/DDK-tagged, C13 and N15-labeled

Cat. No. HRAS-3319H Lot. No. (See product label)

## SPECIFICATION

<b>Product Overview</b>	HRAS MS Standard C13 and N15-labeled recombinant protein (NP_001123914) with a C-terminal MYC/DDK tag, was expressed in HEK293 cells.
<b>Species</b>	Human
<b>Source</b>	HEK293
<b>Description</b>	<p>This gene belongs to the Ras oncogene family, whose members are related to the transforming genes of mammalian sarcoma retroviruses. The products encoded by these genes function in signal transduction pathways. These proteins can bind GTP and GDP, and they have intrinsic GTPase activity. This protein undergoes a continuous cycle of de- and re-palmitoylation, which regulates its rapid exchange between the plasma membrane and the Golgi apparatus. Mutations in this gene cause Costello syndrome, a disease characterized by increased growth at the prenatal stage, growth deficiency at the postnatal stage, predisposition to tumor formation, cognitive disability, skin and musculoskeletal abnormalities, distinctive facial appearance and cardiovascular abnormalities. Defects in this gene are implicated in a variety of cancers, including bladder cancer, follicular thyroid cancer, and oral squamous cell carcinoma. Multiple transcript variants, which encode different isoforms, have been identified for this gene.</p>
<b>Molecular Mass</b>	21.1 kDa

 Tel: 1-631-559-9269 1-516-512-3133

 Email: [info@creative-biomart.com](mailto:info@creative-biomart.com)  Fax: 1-631-938-8127

 45-1 Ramsey Road, Shirley, NY 11967, USA

<b>AA Sequence</b>	MTEYKLVVVGAGGVGKSALTIQLIQNHFVDEYDPTIEDSYRKQVVIDGETCLLDILDTA GQEEYSAMRDQYMRTGEGFLCVFAINNTKSFEDIHQYREQIKRVKDSDDVPMVLVG NKCDLAARTVESRQAQDLVRSYGIPYIETSAKTRQGVEDAFYTLVREIRQHKLRKLN PPDESGPGCMSCKCVLSTRTRPLEQKLISEEDLAANDILDYKDDDDKV
<b>Purity</b>	> 80% as determined by SDS-PAGE and Coomassie blue staining
<b>Stability</b>	Stable for 3 months from receipt of products under proper storage and handling conditions.
<b>Storage</b>	Store at -80 centigrade. Avoid repeated freeze-thaw cycles.
<b>Concentration</b>	50 µg/mL as determined by BCA
<b>Storage Buffer</b>	100 mM glycine, 25 mM Tris-HCl, pH 7.3.
<b>GENE INFORMATION</b>	
<b>Gene Name</b>	HRAS v-Ha-ras Harvey rat sarcoma viral oncogene homolog [ Homo sapiens (human) ]
<b>Official Symbol</b>	HRAS
<b>Synonyms</b>	HRAS; v-Ha-ras Harvey rat sarcoma viral oncogene homolog; HRAS1; GTPase HRas; p21ras; H-Ras-1; p19 H-RasIDX protein; c-has/bas p21 protein; transforming protein p21; Ha-Ras1 proto-oncoprotein; c-ras-Ki-2 activated oncogene; GTP- and GDP-binding peptide B; transformation gene: oncogene HAMSVM; Ras family small GTP binding protein H-Ras; CTLO; HAMSVM; K-RAS; N-RAS; RASH1; C-H-RAS; H-RASIDX; C-BAS/HAS; C-HA-RAS1;
<b>Gene ID</b>	3265

Tel: 1-631-559-9269 1-516-512-3133

Email: [info@creative-biomart.com](mailto:info@creative-biomart.com) Fax: 1-631-938-8127

45-1 Ramsey Road, Shirley, NY 11967, USA

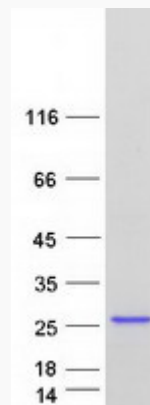
mRNA Refseq [NM\\_001130442](#)

Protein Refseq [NP\\_001123914](#)

MIM [190020](#)

UniProt ID [P01112](#)

**SDS-PAGE**



 Tel: 1-631-559-9269 1-516-512-3133

 Email: [info@creative-biomart.com](mailto:info@creative-biomart.com)  Fax: 1-631-938-8127

 45-1 Ramsey Road, Shirley, NY 11967, USA