

Active Recombinant Human HRG protein, His-tagged

Cat. No. HRG-753H Lot. No. (See product label)

SPECIFICATION

Product Overview	Active Recombinant Human HRG protein(NP_000403.1) (Met 1-Lys 525) with a C-terminal polyhistidine tag was expressed in HEK293.
Species	Human
Source	HEK293
ProteinLength	1-525 aa
Form	Lyophilized from sterile PBS, pH 7.4.
Bio-activity	Measured by its ability to support the adhesion of MOLT-4 human acute lymphoblastic leukemia cells. (Lamb-Wharton, R.J. and W.T. Morgen, 1993, Cell Immunol. 152: 544). Human HPRG immobilized at 1 µg/ml (100 µl/well) will induce >65% MOLT4 cell adhesion (1 x 10E5 cells/well) in the presence of 7.5 µg/ml Concanvalin A.
Molecular Mass	The secreted recombinant human HPRG comprises 518 amino acids with a predicted molecular mass of 59 kDa. As a result of glycosylation, rhHPRG migrates as an approximately 75-80 kDa band in SDS-PAGE under reducing conditions.
Endotoxin	< 1.0 EU per µg of the protein as determined by the LAL method.
Purity	> 97 % as determined by SDS-PAGE

 Tel: 1-631-559-9269 1-516-512-3133

 Email: info@creative-biomart.com  Fax: 1-631-938-8127

 45-1 Ramsey Road, Shirley, NY 11967, USA

Storage Store it under sterile conditions at -20°C to -80°C upon receiving. Recommend to aliquot the protein into smaller quantities for optimal storage. Avoid repeated freeze-thaw cycles.

Reconstitution It is recommended that sterile water be added to the vial to prepare a stock solution of 0.2 ug/ul. Centrifuge the vial at 4°C before opening to recover the entire contents.

GENE INFORMATION

Gene Name HRG histidine-rich glycoprotein [Homo sapiens]

Official Symbol HRG

Synonyms HRG; histidine-rich glycoprotein; histidine proline rich glycoprotein; HPRG; HRGP; thrombophilia due to elevated HRG; histidine-proline-rich glycoprotein; THPH11; DKFZp779H1622;

Gene ID 3273

mRNA Refseq NM_000412

Protein Refseq NP_000403

MIM 142640

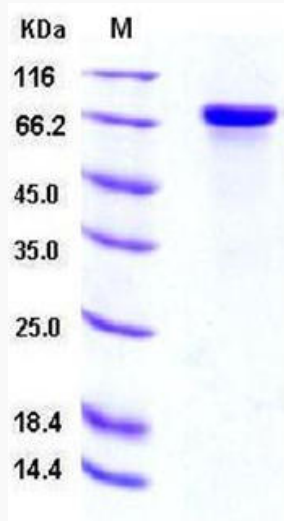
UniProt ID P04196

 Tel: 1-631-559-9269 1-516-512-3133

 Email: info@creative-biomart.com  Fax: 1-631-938-8127

 45-1 Ramsey Road, Shirley, NY 11967, USA

SDS-PAGE



 Tel: 1-631-559-9269 1-516-512-3133

 Email: info@creative-biomart.com  Fax: 1-631-938-8127

 45-1 Ramsey Road, Shirley, NY 11967, USA