

# Recombinant Full Length Human HRG Protein, C-Flag-tagged

**Cat. No.** HRG-799HFL    **Lot. No.** (See product label)

## SPECIFICATION

<b>Product Overview</b>	Recombinant Full Length Human HRG Protein, fused to Flag-tag at C-terminus, was expressed in Mammalian cells.
<b>Species</b>	Human
<b>Source</b>	Mammalian Cells
<b>Description</b>	This histidine-rich glycoprotein contains two cystatin-like domains and is located in plasma and platelets. The physiological function has not been determined but it is known that the protein binds heme, dyes and divalent metal ions. The encoded protein also has a peptide that displays antimicrobial activity against <i>C. albicans</i> , <i>E. coli</i> , <i>S. aureus</i> , <i>P. aeruginosa</i> , and <i>E. faecalis</i> . It can inhibit rosette formation and interacts with heparin, thrombospondin and plasminogen. Two of the protein's effects, the inhibition of fibrinolysis and the reduction of inhibition of coagulation, indicate a potential prothrombotic effect. Mutations in this gene lead to thrombophilia due to abnormal histidine-rich glycoprotein levels.
<b>Form</b>	25 mM Tris HCl, pH 7.3, 100 mM glycine, 10% glycerol.
<b>Molecular Mass</b>	57.6 kDa
<b>AA Sequence</b>	MKALIAALLLITLQYSCAVSPTDCSAVEPEAEKALDLINKRRRDGYLFQLLRIADAHLDRVENTTVYYLV LDVQESDCSVLSRKYWNDCEPPDSRRPSEIVIGQCKVIATRHSHE SQDLRVIDFNCTTSSVSSALANTKD SPVLIDFFEDTERYRKQANKALEKYKEENDDF ASFRVDRIERVARVRGGEGTGYFVDFSVRNCPRHHFPR HPNVFGFCRADLFYDVE

 Tel: 1-631-559-9269    1-516-512-3133

 Email: [info@creative-biomart.com](mailto:info@creative-biomart.com)     Fax: 1-631-938-8127

 45-1 Ramsey Road, Shirley, NY 11967, USA



ALDLESPKNLVINCEVFDPQEHENINGVPPHLGHPFHWGGHERSSTTKPPFKP HGS  
 RDHHHPHKPHEHGPPPPDERDHSHPPLPQGPPPLLPMSCSSCQHATFGTNGA  
 QRHSHNNSSDLH PHKHHSHEQHPHGHHPHAAHPHEHDTHRQHPHGHHHPHGHH  
 PHGHHHPHGHHHPHGHHPHCHDFQDYGPCDPP PHNQGHCCGHGPPPGHLRRRG  
 PGKGPRPFHCRQIGSVYRLPPLRKGEVLPLPEANFPSFPLPHHKHPLK  
 PDNQPFQSVSESCPGKFKSGFPQVSMFFTHTFPKTRTRPLEQKLISEEDLAANDIL  
 DYKDDDDKV

<b>Purity</b>	> 80% as determined by SDS-PAGE and Coomassie blue staining.
<b>Stability</b>	Stable for 12 months from the date of receipt of the product under proper storage and handling conditions. Avoid repeated freeze-thaw cycles.
<b>Storage</b>	Store at -80 centigrade.
<b>Concentration</b>	>50 ug/mL as determined by microplate BCA method.
<b>Preparation</b>	Recombinant protein was captured through anti-DDK affinity column followed by conventional chromatography steps.
<b>Protein Families</b>	Secreted Protein
<b>Full Length</b>	Full L.

## GENE INFORMATION

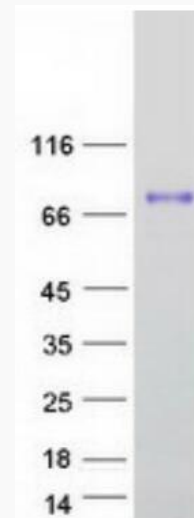
<b>Gene Name</b>	HRG histidine rich glycoprotein [ Homo sapiens (human) ]
<b>Official Symbol</b>	HRG
<b>Synonyms</b>	HPRG; HRGP; THPH11

Tel: 1-631-559-9269 1-516-512-3133

Email: [info@creative-biomart.com](mailto:info@creative-biomart.com) Fax: 1-631-938-8127

45-1 Ramsey Road, Shirley, NY 11967, USA

Gene ID	3273
mRNA Refseq	NM_000412.5
Protein Refseq	NP_000403.1
MIM	142640
UniProt ID	P04196



Coomassie blue staining of purified HRG protein.

Tel: 1-631-559-9269 1-516-512-3133

Email: [info@creative-biomart.com](mailto:info@creative-biomart.com) Fax: 1-631-938-8127

45-1 Ramsey Road, Shirley, NY 11967, USA