

Recombinant Human HSDL1 Protein, Myc/DDK-tagged, C13 and N15-labeled

Cat. No. HSDL1-1127H Lot. No. (See product label)

SPECIFICATION

Product Overview	HSDL1 MS Standard C13 and N15-labeled recombinant protein (NP_113651) with a C-terminal MYC/DDK tag, was expressed in HEK293 cells.
Species	Human
Source	HEK293
Description	HSDL1 (Hydroxysteroid Dehydrogenase Like 1) is a Protein Coding gene. Gene Ontology (GO) annotations related to this gene include oxidoreductase activity. An important paralog of this gene is HSD17B12.
Molecular Mass	37 kDa
AA Sequence	MAAVDSFYLLYREIARSCNCYMEALALVGAWYTARKSITVICDFYSLIRLHFIPRLGSR ADLIKQYGRWAVVSGATDGIGKAYAEELASRGLNIILISRNEEKLQVVAKDIADTYKVE TDIIVADFSSGREIYLPIREALKDKDVGILVNNVGVFYPYPQYFTQLSEDKLWDIINVNI AAASLMVHVVLPGMVERKKGAIVTISSGSCCKPTPQLAAFSASKAYLDHFSRALQYE YASKGIFVQSLIPFYVAASMTAPSNFLHRCSWLVPSPKVYAHHAVSTLGISKRTTGY WSHSIQFLFAQYMPPEWLWVWGANILNRSLRKEALSCTATRTRPLEQKLISEEDLAN DILDYKDDDDKV
Purity	> 80% as determined by SDS-PAGE and Coomassie blue staining
Stability	Stable for 3 months from receipt of products under proper storage and handling

 Tel: 1-631-559-9269 1-516-512-3133

 Email: info@creative-biomart.com  Fax: 1-631-938-8127

 45-1 Ramsey Road, Shirley, NY 11967, USA

conditions.

Storage Store at -80 centigrade. Avoid repeated freeze-thaw cycles.

Concentration 50 µg/mL as determined by BCA

Storage Buffer 100 mM glycine, 25 mM Tris-HCl, pH 7.3.

GENE INFORMATION

Gene Name [HSDL1 hydroxysteroid dehydrogenase like 1 \[Homo sapiens \(human\) \]](#)

Official Symbol [HSDL1](#)

Synonyms HSDL1; hydroxysteroid dehydrogenase like 1; inactive hydroxysteroid dehydrogenase-like protein 1; SDR12C3; short chain dehydrogenase/reductase family 12C; member 3; steroid dehydrogenase-like protein; short chain dehydrogenase/reductase family 12C, member 3; MGC125994; MGC125995; MGC126032;

Gene ID [83693](#)

mRNA Refseq [NM_031463](#)

Protein Refseq [NP_113651](#)

MIM [619067](#)

UniProt ID [Q3SXM5](#)

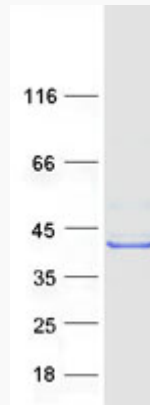
 Tel: 1-631-559-9269 1-516-512-3133

 Email: info@creative-biomart.com  Fax: 1-631-938-8127

 45-1 Ramsey Road, Shirley, NY 11967, USA



SDS-PAGE



Tel: 1-631-559-9269 1-516-512-3133

Email: info@creative-biomart.com Fax: 1-631-938-8127

45-1 Ramsey Road, Shirley, NY 11967, USA