

## Recombinant Human HSP90AA1 protein, His-tagged

Cat. No. HSP90AA1-1342H Lot. No. (See product label)

### SPECIFICATION

<b>Product Overview</b>	Recombinant Human HSP90AA1 protein(P07900)(1-291aa), fused to C-terminal His tag, was expressed in E. coli.
<b>Species</b>	Human
<b>Source</b>	E.coli
<b>ProteinLength</b>	1-291aa
<b>Form</b>	If the delivery form is liquid, the default storage buffer is Tris/PBS-based buffer, 5%-50% glycerol. If the delivery form is lyophilized powder, the buffer before lyophilization is Tris/PBS-based buffer, 6% Trehalose, pH 8.0.
<b>Molecular Mass</b>	34.2 kDa
<b>Purity</b>	Greater than 90% as determined by SDS-PAGE.
<b>Storage</b>	Store at -20°C/-80°C upon receipt, aliquoting is necessary for mutiple use. Avoid repeated freeze-thaw cycles.
<b>Reconstitution</b>	It is recommended that sterile water be added to the vial to prepare a stock solution of 0.2 ug/ul. Centrifuge the vial at 4°C before opening to recover the entire contents.

### GENE INFORMATION

 Tel: 1-631-559-9269 1-516-512-3133

 Email: [info@creative-biomart.com](mailto:info@creative-biomart.com)  Fax: 1-631-938-8127

 45-1 Ramsey Road, Shirley, NY 11967, USA

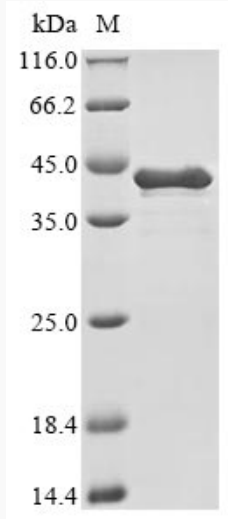
<b>Gene Name</b>	HSP90AA1 heat shock protein 90kDa alpha (cytosolic), class A member 1 [ Homo sapiens ]
<b>Official Symbol</b>	HSP90AA1
<b>Synonyms</b>	HSP90AA1; heat shock protein 90kDa alpha (cytosolic), class A member 1; heat shock 90kD protein 1, alpha , heat shock 90kDa protein 1, alpha , HSPC1, HSPCA; heat shock protein HSP 90-alpha; FLJ31884; Hsp89; Hsp90; HSP90N; HSP 86; heat shock 86 kDa; heat shock 90kD protein 1, alpha; heat shock 90kDa protein 1, alpha; renal carcinoma antigen NY-REN-38; heat shock 90kD protein, alpha-like 4; heat shock 90kD protein 1, alpha-like 4; HSPN; LAP2; HSP86; HSPC1; HSPCA; HSP89A; HSP90A; HSPCAL1; HSPCAL4;
<b>Gene ID</b>	3320
<b>mRNA Refseq</b>	NM_001017963
<b>Protein Refseq</b>	NP_001017963
<b>MIM</b>	140571
<b>UniProt ID</b>	P07900

 Tel: 1-631-559-9269 1-516-512-3133

 Email: [info@creative-biomart.com](mailto:info@creative-biomart.com)  Fax: 1-631-938-8127

 45-1 Ramsey Road, Shirley, NY 11967, USA

**SDS-PAGE**



 Tel: 1-631-559-9269 1-516-512-3133

 Email: [info@creative-biomart.com](mailto:info@creative-biomart.com)  Fax: 1-631-938-8127

 45-1 Ramsey Road, Shirley, NY 11967, USA