

Recombinant Human HSP90AA1 protein, GST-tagged

Cat. No. HSP90AA1-366H **Lot. No.** (See product label)

SPECIFICATION

Product Overview	Recombinant Human HSP90AA1 protein (Glu535-Asp732), fused to GST tag at N-terminus, was expressed in E.coli.
Species	Human
Source	E.coli
ProteinLength	198
Description	Heat shock protein HSP 90-alpha (HSP90AA1 or HSP90A) is also known as Heat shock 86 kDa (HSP 86 or HSP86), Renal carcinoma antigen NY-REN-38, HSPC1, HSPCA, EL52, HSP89A, HSP90N, HSPCAL1, HSPCAL4, HSPN, Hsp89, Hsp90, LAP2, which belongs to the heat shock protein 90 family. HSP90AA1 undergoes a functional cycle that is linked to its ATPase activity. This cycle probably induces conformational changes in the client proteins, thereby causing their activation. HSP90AA1 interacts dynamically with various co-chaperones that modulate its substrate recognition, ATPase cycle and chaperone function.
Form	Lyophilized from 0.22 um filtered solution in 50 mM HEPES, 150 mM NaCl, pH7.0, 10% trehalose.
Molecular Mass	The protein has a calculated MW of 49.3 kDa. The protein migrates as 49 kDa under reducing (R) condition (SDS-PAGE).
Endotoxin	Less than 1.0 EU per ug by the LAL method.

 Tel: 1-631-559-9269 1-516-512-3133

 Email: info@creative-biomart.com  Fax: 1-631-938-8127

 45-1 Ramsey Road, Shirley, NY 11967, USA

Purity	>85% as determined by SDS-PAGE.
Storage	<p>For long term storage, the product should be stored at lyophilized state at -20 centigrade or lower.</p> <p>Please avoid repeated freeze-thaw cycles.</p> <p>This product is stable after storage at:</p> <p>-20 centigrade to -70 centigrade for 12 months in lyophilized state; -70 centigrade for 3 months under sterile conditions after reconstitution.</p>
Reconstitution	It is recommended that sterile water be added to the vial to prepare a stock solution of 0.2 ug/ul. Centrifuge the vial at 4°C before opening to recover the entire contents.
GENE INFORMATION	
Gene Name	HSP90AA1
Official Symbol	HSP90AA1
Synonyms	HSP90AA1; heat shock protein 90kDa alpha (cytosolic), class A member 1; heat shock 90kD protein 1, alpha , heat shock 90kDa protein 1, alpha , HSPC1, HSPCA; heat shock protein HSP 90-alpha; FLJ31884; Hsp89; Hsp90; HSP90N; HSP 86; heat shock 86 kDa; heat shock 90kD protein 1, alpha; heat shock 90kDa protein 1, alpha; renal carcinoma antigen NY-REN-38; heat shock 90kD protein, alpha-like 4; heat shock 90kD protein 1, alpha-like 4; HSPN; LAP2; HSP86; HSPC1; HSPCA; HSP89A; HSP90A; HSPCAL1; HSPCAL4
Gene ID	3320
mRNA Refseq	NM_001017963
Protein Refseq	NP_001017963

 Tel: 1-631-559-9269 1-516-512-3133

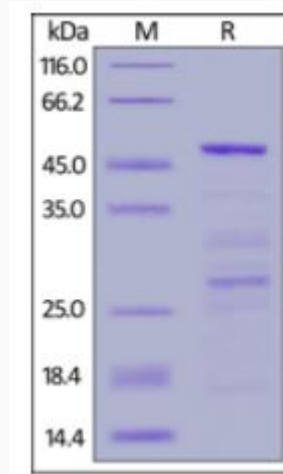
 Email: info@creative-biomart.com  Fax: 1-631-938-8127

 45-1 Ramsey Road, Shirley, NY 11967, USA

MIM 140571

UniProt ID P07900

**SDS-PAGE of
HSP90AA1-366H**



Human HSP90AA1, GST Tag on SDS-PAGE under reducing (R) condition. The gel was stained overnight with Coomassie Blue. The purity of the protein is greater than 85%.

 Tel: 1-631-559-9269 1-516-512-3133

 Email: info@creative-biomart.com  Fax: 1-631-938-8127

 45-1 Ramsey Road, Shirley, NY 11967, USA