

Recombinant Full Length Human HSP90AA1 Protein, C-Flag-tagged

Cat. No. HSP90AA1-987HFL **Lot. No.** (See product label)

SPECIFICATION

Product Overview	Recombinant Full Length Human HSP90AA1 Protein, fused to Flag-tag at C-terminus, was expressed in Mammalian cells.
Species	Human
Source	Mammalian Cells
Description	The protein encoded by this gene is an inducible molecular chaperone that functions as a homodimer. The encoded protein aids in the proper folding of specific target proteins by use of an ATPase activity that is modulated by co-chaperones. Two transcript variants encoding different isoforms have been found for this gene.
Form	25 mM Tris HCl, pH 7.3, 100 mM glycine, 10% glycerol.
Molecular Mass	84.5 kDa
AA Sequence	MPEETQTQDQPMEEEEVETFAFQAEIAQLMSLIINTFYSNKEIFLRELISNSSDALDKI RYESLTDPSKL DSGKELHINLIPNKQDRTLIVDTGIGMTKADLINNLGTIAKSGTKAF MEALQAGADISMIGQFGVGFYS AYLVAEKVTVITKHNDDEQYAWESSAGGSFTVRT DTGEPMGRGTKVILHLKEDQTEYLEERRIKEIVKKH SQFIGYPITLFVEKERDKEVSD DEAEKEDKEEEEKEKEEKESEDKPEIEDVGSDEEEEKKGDKKKKKKI KEKYIDQEE LNKTKPIWTRNPDDITNEEYGEFYKSLTNDWEDHLAVKHFSVEGQLEFRALLFVPRR APFD LFENRKKKNNIKLYVRRVFIMDNCEELIPEYLNFIIRGVVDSIDLPLNISREMLQ QSKILKVIKKNLVKCC LELFTELAEDKENYKFFYEQFSKNIKLGIHEDSQNRKKLSELL

 Tel: 1-631-559-9269 1-516-512-3133

 Email: info@creative-biomart.com  Fax: 1-631-938-8127

 45-1 Ramsey Road, Shirley, NY 11967, USA



RYYTSASGDEMVS LKDYCTRMKENQKH IYYITGETKDQVANS AFVERLRKHGLEVI
 YMI EPIDEYCVQQLKEFEGKTLVSVTKEGLELPEDEEEKKK QEEKKTKFENLCKIMK
 DILEKKVEKVVVSNRLVTSPCCIVTSTYGWTANMERIMKAQALRDNSTMGYMAA KK
 HLEINPDHSIIETLRQKAEADKNDKSVKDLVILLYETALLSSGFSLEDPQTHANRIYRMI
 KLGLGIDE
 DDPTADDTSAAVTEEMPPLGDDDDTSRMEEVDTRTRPLEQKLISEEDLAANDILDYK
 DDDDKV

Purity	> 80% as determined by SDS-PAGE and Coomassie blue staining.
Stability	Stable for 12 months from the date of receipt of the product under proper storage and handling conditions. Avoid repeated freeze-thaw cycles.
Storage	Store at -80 centigrade.
Concentration	>50 ug/mL as determined by microplate BCA method.
Preparation	Recombinant protein was captured through anti-DDK affinity column followed by conventional chromatography steps.
Protein Families	Druggable Genome
Protein Pathways	Antigen processing and presentation, NOD-like receptor signaling pathway, Pathways in cancer, Progesterone-mediated oocyte maturation, Prostate cancer
Full Length	Full L.

GENE INFORMATION

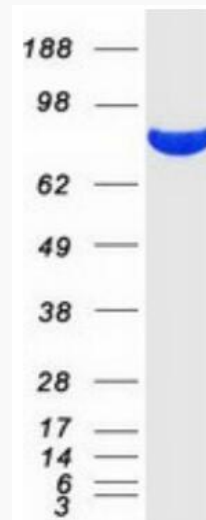
Gene Name	HSP90AA1 heat shock protein 90 alpha family class A member 1 [Homo sapiens (human)]
------------------	---

Tel: 1-631-559-9269 1-516-512-3133

Email: info@creative-biomart.com Fax: 1-631-938-8127

45-1 Ramsey Road, Shirley, NY 11967, USA

Official Symbol	HSP90AA1
Synonyms	EL52; HSPN; LAP2; HSP86; HSPC1; HSPCA; Hsp89; Hsp90; LAP-2; HSP89A; HSP90A; HSP90N; Hsp103; HSPCAL1; HSPCAL4; HEL-S-65p
Gene ID	3320
mRNA Refseq	NM_005348.4
Protein Refseq	NP_005339.3
MIM	140571
UniProt ID	P07900



Coomassie blue staining of purified HSP90AA1 protein.

 Tel: 1-631-559-9269 1-516-512-3133

 Email: info@creative-biomart.com  Fax: 1-631-938-8127

 45-1 Ramsey Road, Shirley, NY 11967, USA