

# Active Recombinant Human HSP90AB1 Protein, His-tagged

**Cat. No.** HSP90AB1-016H    **Lot. No.** (See product label)

## SPECIFICATION

<b>Product Overview</b>	Recombinant full length human HSP90AB1 protein (2-724) with a N-terminal Histidine tag was expressed in E. coli.
<b>Species</b>	Human
<b>Source</b>	E.coli
<b>ProteinLength</b>	2-724
<b>Description</b>	This gene encodes a member of the heat shock protein 90 family; these proteins are involved in signal transduction, protein folding and degradation and morphological evolution. This gene encodes the constitutive form of the cytosolic 90 kDa heat-shock protein and is thought to play a role in gastric apoptosis and inflammation. Alternative splicing results in multiple transcript variants. Pseudogenes have been identified on multiple chromosomes.
<b>Bio-activity</b>	ATPase activity confirmed by ADP detection assay
<b>Molecular Mass</b>	85 kDa
<b>Purity</b>	≥80% estimated by SDS-PAGE
<b>Stability</b>	≥ 6 months
<b>Storage</b>	Store at -80 centigrade

 Tel: 1-631-559-9269    1-516-512-3133

 Email: [info@creative-biomart.com](mailto:info@creative-biomart.com)     Fax: 1-631-938-8127

 45-1 Ramsey Road, Shirley, NY 11967, USA

**Shipping** Dry ice in continental US; may vary elsewhere

## GENE INFORMATION

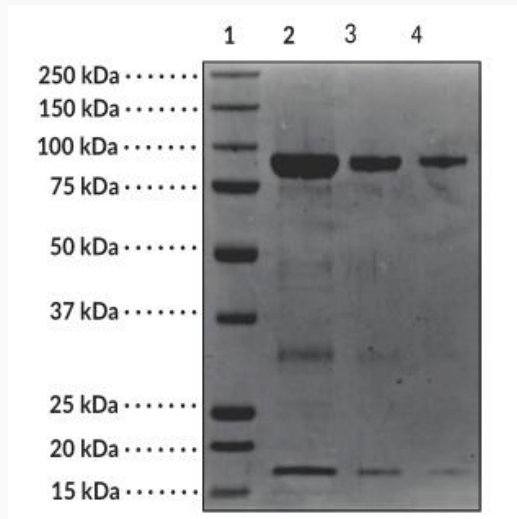
<b>Gene Name</b>	HSP90AB1 heat shock protein 90 alpha family class B member 1 [ Homo sapiens (human) ]
<b>Official Symbol</b>	HSP90AB1
<b>Synonyms</b>	HSP90AB1; heat shock protein 90 alpha family class B member 1; HSP84; HSPC2; HSPCB; D6S182; HSP90B; heat shock protein HSP 90-beta; HSP90-beta; heat shock 84 kDa; heat shock 90kD protein 1, beta; heat shock protein 90 kDa; heat shock protein 90kDa alpha (cytosolic), class B member 1; heat shock protein 90kDa alpha family class B member 1
<b>Gene ID</b>	3326
<b>mRNA Refseq</b>	NM_001271969
<b>Protein Refseq</b>	NP_001258898
<b>MIM</b>	140572
<b>UniProt ID</b>	P08238

 Tel: 1-631-559-9269 1-516-512-3133

 Email: [info@creative-biomart.com](mailto:info@creative-biomart.com)  Fax: 1-631-938-8127

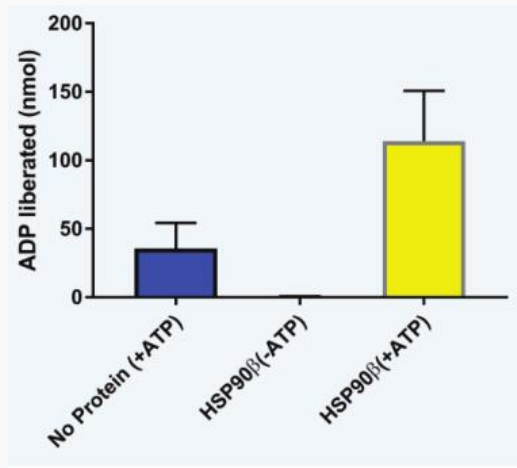
 45-1 Ramsey Road, Shirley, NY 11967, USA

**SDS-PAGE analysis  
of HSP90AB1.**



Lane 1: MW Markers  
 Lane 2: HSP90AB1 (4 µg)  
 Lane 3: HSP90AB1 (2 µg)  
 Lane 4: HSP90AB1 (1 µg)

**ATPase Activity of  
HSP90AB1**



Tel: 1-631-559-9269 1-516-512-3133

Email: [info@creative-biomart.com](mailto:info@creative-biomart.com) Fax: 1-631-938-8127

45-1 Ramsey Road, Shirley, NY 11967, USA