

## Recombinant Human HSPA1L Protein, GST-tagged

Cat. No. HSPA1L-5103H Lot. No. (See product label)

### SPECIFICATION

<b>Product Overview</b>	Human HSPA1L full-length ORF ( AAH34483.1, 1 a.a. - 641 a.a.) recombinant protein with GST-tag at N-terminal.
<b>Species</b>	Human
<b>Source</b>	Wheat Germ
<b>Description</b>	This gene encodes a 70kDa heat shock protein. In conjunction with other heat shock proteins, this protein stabilizes existing proteins against aggregation and mediates the folding of newly translated proteins in the cytosol and in organelles. The gene is located in the major histocompatibility complex class III region, in a cluster with two closely related genes which also encode isoforms of the 70kDa heat shock protein. [provided by RefSeq]
<b>Molecular Mass</b>	96.8 kDa
<b>AA Sequence</b>	MATAKGIAIGIDLGTTYSCVGVFQHGKVEIANDQGNRTTPSYVAFTDTERLIGDAAK NQVAMNPQNTVFDKRLIGRKFNDPVVQADMKLWPFQVINEGGKPKVLVSYKGEN KAFYPEEISSMVLTKLKETAFLGHPVTNAVITVPAYFNDSQRQATKDAGVIAGLNV LRIINEPTAAAIAYGLDKGGQGERHVLIFDLGGGTFDVSILTIDDGIFEVKATAGDTHLG GEDFDNRLVSHFVEEFKRKHKKDISQNKRAVRRRLTACERAKRTLSSSTQANLEIDS LYEGIDFYTSITRARFEELCADLFRGTLEPVEKALRDAKMDKAKIHDIVLVGGSTRIPK VQRLLQDYFNDRDLNKSINPDEAVAYGAAVQAAILMGDKSEKVQDLLLDDVAPLSLG LETAGGVMTALMKRNSTIPTKQTQIFTTYSNQPVGVLIQVYEGERAMTKDNNLLGRF

 Tel: 1-631-559-9269 1-516-512-3133

 Email: [info@creative-biomart.com](mailto:info@creative-biomart.com)  Fax: 1-631-938-8127

 45-1 Ramsey Road, Shirley, NY 11967, USA

DLTGIPPAPRGVPQIEVTFDIDANGILNVTAMDKSTGKVNKITIANDKGRLSKEEIERM  
 VLDAEKYKAEDEVQREKIAAKNALESYAFNMKSVVSDEGLKKGKISESDKNKILDKCN  
 ELLSWLEVNQLAEKDEFDHRKELEQMCNPIITKLYQGGCTGPACGTGYVPGRPAT  
 GPTIEEVD

<b>Applications</b>	Enzyme-linked Immunoabsorbent Assay Western Blot (Recombinant protein) Antibody Production Protein Array
<b>Notes</b>	Best use within three months from the date of receipt of this protein.
<b>Storage</b>	Store at -8 centigrade. Aliquot to avoid repeated freezing and thawing.
<b>Storage Buffer</b>	50 mM Tris-HCl, 10 mM reduced Glutathione, pH=8.0 in the elution buffer.

## GENE INFORMATION

<b>Gene Name</b>	<a href="#">HSPA1L heat shock 70kDa protein 1-like [ Homo sapiens ]</a>
<b>Official Symbol</b>	<a href="#">HSPA1L</a>
<b>Synonyms</b>	HSPA1L; heat shock 70kDa protein 1-like; heat shock 70kD protein like 1; heat shock 70 kDa protein 1-like; HSP70 HOM; hum70t; heat shock 70 kDa protein 1L; heat shock 70kD protein-like 1; heat shock 10kDa protein 1-like; heat shock 70 kDa protein 1-Hom; HSP70T; HSP70-1L; HSP70-HOM;
<b>Gene ID</b>	<a href="#">3305</a>
<b>mRNA Refseq</b>	<a href="#">NM_005527</a>

 Tel: 1-631-559-9269 1-516-512-3133

 Email: [info@creative-biomart.com](mailto:info@creative-biomart.com)  Fax: 1-631-938-8127

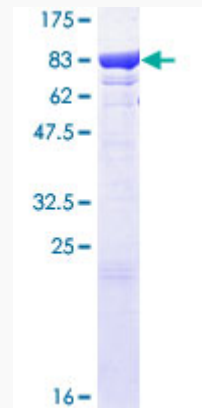
 45-1 Ramsey Road, Shirley, NY 11967, USA

**Protein Refseq** NP\_005518

**MIM** 140559

**UniProt ID** P34931

**Quality Control  
Testing**



12.5% SDS-PAGE Stained with Coomassie Blue.

 Tel: 1-631-559-9269 1-516-512-3133

 Email: [info@creative-biomart.com](mailto:info@creative-biomart.com)  Fax: 1-631-938-8127

 45-1 Ramsey Road, Shirley, NY 11967, USA