

Active Recombinant Human HSPA4 Protein (Full Length, 1-641)

Cat. No. HSPA4-1560H Lot. No. (See product label)

SPECIFICATION

| | |
|-------------------------|--|
| Product Overview | Recombinant Full Length Human HSPA4 Protein (1-641) without tag was expressed in E. coli. |
| Species | Human |
| Source | E.coli |
| ProteinLength | 1-641 |
| Description | Predicted to enable ATP binding activity. Involved in chaperone-mediated protein complex assembly and protein insertion into mitochondrial outer membrane. Located in cytosol and extracellular exosome. Implicated in Chagas disease. Biomarker of chronic obstructive pulmonary disease; rheumatoid arthritis; type 2 diabetes mellitus; and ulcerative colitis. |
| Bio-activity | HSP70 has ATPase activity at the time of manufacture of 3.3 μM phosphate liberated/hr/μg protein in a 200 μL reaction at 37 centigrade (pH7.5) in the presence of 20 μL of 1 mM ATP using a Malachite Green assay. |
| Molecular Mass | 70 kDa |
| Purity | Near homogeneity by SDS-PAGE |
| Applications | ATP Activity Assay, ELISA standard, WB control, Binding Assay |

 Tel: 1-631-559-9269 1-516-512-3133

 Email: info@creative-biomart.com  Fax: 1-631-938-8127

 45-1 Ramsey Road, Shirley, NY 11967, USA

Storage Stable for 2 years at -70 centigrade from date of shipment. Please aliquot to avoid repeated freezing and thawing.

Storage Buffer Purified HSP70 in 20 mM Tris-HCl, pH 7.5, 50 mM KCl, 1 mM DTT, 5 mM MgCl₂.

GENE INFORMATION

Gene Name HSPA4 heat shock protein family A (Hsp70) member 4 [Homo sapiens (human)]

Official Symbol HSPA4

Synonyms HSPA4; heat shock protein family A (Hsp70) member 4; RY; APG-2; HSPH2; hsp70; hsp70RY; HEL-S-5a; HS24/P52; heat shock 70 kDa protein 4; epididymis secretory sperm binding protein Li 5a; heat shock 70-related protein APG-2; heat shock 70kD protein 4; heat shock protein, 110 kDa; hsp70 RY

Gene ID 3308

mRNA Refseq NM_002154

Protein Refseq NP_002145

MIM 601113

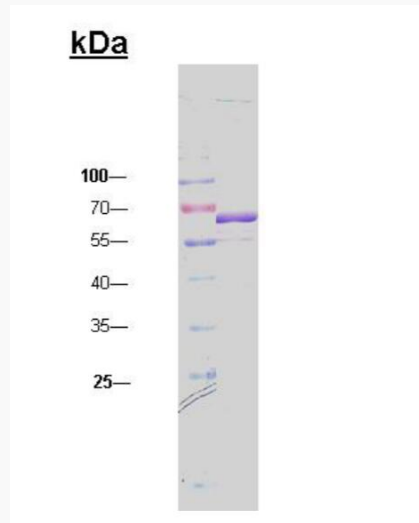
UniProt ID P34932

 Tel: 1-631-559-9269 1-516-512-3133

 Email: info@creative-biomart.com  Fax: 1-631-938-8127

 45-1 Ramsey Road, Shirley, NY 11967, USA

SDS-PAGE



 Tel: 1-631-559-9269 1-516-512-3133

 Email: info@creative-biomart.com  Fax: 1-631-938-8127

 45-1 Ramsey Road, Shirley, NY 11967, USA