

Active Recombinant Human HSPA5 Protein, His-tagged

Cat. No. HSPA5-014H Lot. No. (See product label)

SPECIFICATION

Product Overview	Recombinant full length human HSPA5 protein (2-654) with a N-terminal Histidine tag was expressed in E. coli.
Species	Human
Source	E.coli
ProteinLength	2-654
Description	The protein encoded by this gene is a member of the heat shock protein 70 (HSP70) family. It is localized in the lumen of the endoplasmic reticulum (ER), and is involved in the folding and assembly of proteins in the ER. As this protein interacts with many ER proteins, it may play a key role in monitoring protein transport through the cell.
Form	50 mM HEPES, pH 8.0, 150 mM sodium chloride, 1 mM DTT, and 10% glycerol
Bio-activity	ATPase activity confirmed by ADP detection assay
Molecular Mass	74.6 kDa
Purity	≥85% estimated by SDS-PAGE
Stability	≥ 1 year
Storage	Store at -80 centigrade

 Tel: 1-631-559-9269 1-516-512-3133

 Email: info@creative-biomart.com  Fax: 1-631-938-8127

 45-1 Ramsey Road, Shirley, NY 11967, USA

Shipping Dry ice in continental US; may vary elsewhere

GENE INFORMATION

Gene Name HSPA5 heat shock protein family A (Hsp70) member 5 [Homo sapiens (human)]

Official Symbol HSPA5

Synonyms HSPA5; heat shock protein family A (Hsp70) member 5; BIP; MIF2; GRP78; HEL-S-89n; endoplasmic reticulum chaperone BiP; 78 kDa glucose-regulated protein; HSP70 family protein 5; binding-immunoglobulin protein; endoplasmic reticulum luminal; Ca(2+)-binding protein grp78; epididymis secretory sperm binding protein Li 89n; glucose-regulated protein, 78kDa; heat shock 70kDa protein 5 (glucose-regulated protein, 78kDa); heat shock protein 70 family protein 5; heat shock protein family A member 5; immunoglobulin heavy chain-binding protein; EC 3.6.4.10

Gene ID 3309

mRNA Refseq NM_005347

Protein Refseq NP_005338

MIM 138120

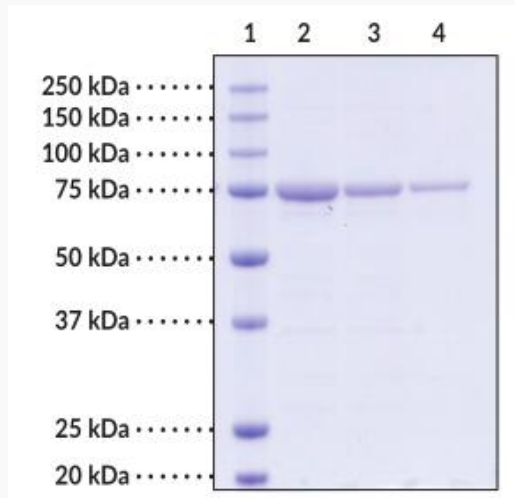
UniProt ID P11021

 Tel: 1-631-559-9269 1-516-512-3133

 Email: info@creative-biomart.com  Fax: 1-631-938-8127

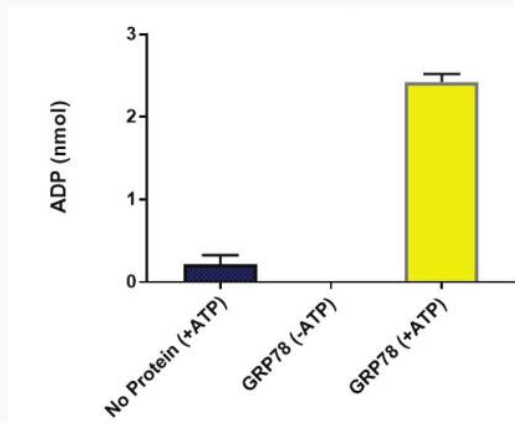
 45-1 Ramsey Road, Shirley, NY 11967, USA

**SDS-PAGE analysis
of HSPA5.**



Lane 1: MW Markers
 Lane 2: HSPA5 (4 g)
 Lane 3: HSPA5 (2 g)
 Lane 4: HSPA58 (1 g)

**ATPase Activity of
HSPA5**



Tel: 1-631-559-9269 1-516-512-3133

Email: info@creative-biomart.com Fax: 1-631-938-8127

45-1 Ramsey Road, Shirley, NY 11967, USA