

## Recombinant Human HSPB1 Protein, His-tagged

Cat. No. HSPB1-070H Lot. No. (See product label)

### SPECIFICATION

<b>Product Overview</b>	Recombinant N-terminally Histidine-tagged full length human Hsp27 protein (2-205) was purified from E. coli.
<b>Species</b>	Human
<b>Source</b>	E.coli
<b>ProteinLength</b>	2-205
<b>Description</b>	This gene encodes a member of the small heat shock protein (HSP20) family of proteins. In response to environmental stress, the encoded protein translocates from the cytoplasm to the nucleus and functions as a molecular chaperone that promotes the correct folding of other proteins. This protein plays an important role in the differentiation of a wide variety of cell types. Expression of this gene is correlated with poor clinical outcome in multiple human cancers, and the encoded protein may promote cancer cell proliferation and metastasis, while protecting cancer cells from apoptosis. Mutations in this gene have been identified in human patients with Charcot-Marie-Tooth disease and distal hereditary motor neuropathy.
<b>Molecular Mass</b>	25.5 kDa
<b>Purity</b>	≥90% as determined by SDS-PAGE
<b>Stability</b>	≥ 2 years

 Tel: 1-631-559-9269 1-516-512-3133

 Email: [info@creative-biomart.com](mailto:info@creative-biomart.com)  Fax: 1-631-938-8127

 45-1 Ramsey Road, Shirley, NY 11967, USA

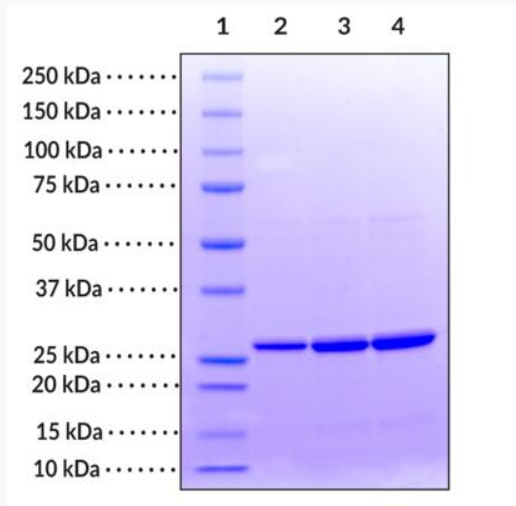
<b>Storage</b>	At -80 centigrade.
<b>Storage Buffer</b>	50 mM Tris HCl, pH 7.5, 150 mM sodium chloride, 1mM DTT, 20% glycerol
<b>GENE INFORMATION</b>	
<b>Gene Name</b>	HSPB1 heat shock protein family B (small) member 1 [ Homo sapiens (human) ]
<b>Official Symbol</b>	HSPB1
<b>Synonyms</b>	HSPB1; heat shock protein family B (small) member 1; CMT2F; HMN2B; HSP27; HSP28; Hsp25; SRP27; HS.76067; HEL-S-102; heat shock protein beta-1; 28 kDa heat shock protein; epididymis secretory protein Li 102; estrogen-regulated 24 kDa protein; heat shock 27 kDa protein; heat shock 27kD protein 1; heat shock 27kDa protein 1; stress-responsive protein 27
<b>Gene ID</b>	3315
<b>mRNA Refseq</b>	NM_001540
<b>Protein Refseq</b>	NP_001531
<b>MIM</b>	602195
<b>UniProt ID</b>	P04792

 Tel: 1-631-559-9269 1-516-512-3133

 Email: [info@creative-biomart.com](mailto:info@creative-biomart.com)  Fax: 1-631-938-8127

 45-1 Ramsey Road, Shirley, NY 11967, USA

**SDS-PAGE analysis  
of Hsp27**



Lane 1: MW Markers  
Lane 2: Hsp27 (1  $\mu$ g)  
Lane 3: Hsp27 (2  $\mu$ g)  
Lane 4: Hsp27 (4  $\mu$ g)

 Tel: 1-631-559-9269 1-516-512-3133

 Email: [info@creative-biomart.com](mailto:info@creative-biomart.com)  Fax: 1-631-938-8127

 45-1 Ramsey Road, Shirley, NY 11967, USA