

Recombinant Human HSPB6 Protein, GST-tagged

Cat. No. HSPB6-5117H Lot. No. (See product label)

SPECIFICATION

Product Overview	Human HSPB6 full-length ORF (AAH68046.1, 1 a.a. - 160 a.a.) recombinant protein with GST-tag at N-terminal.
Species	Human
Source	Wheat Germ
Description	HSPB6 is associated with actin (see MIM 102540) and modulates smooth muscle relaxation (Tessier et al., 2003 [PubMed 12842460]).[supplied by OMIM
Molecular Mass	43.6 kDa
AA Sequence	MEIPVPVQPSWLRRASAPLLGLSAPGRLFDQRFEGGLLEAELAALCPTTLAPYYLRA PSVALPVAQVPTDPGHFSVLLDVKHFSPEEIAVKVVGEHVEVHARHEERPDEHGFV AREFHRRYRLPPGVDPAAVTSALSPEGVLSIQAAPASAQAPPPAAAK
Applications	Enzyme-linked Immunoabsorbent Assay Western Blot (Recombinant protein) Antibody Production Protein Array
Notes	Best use within three months from the date of receipt of this protein.
Storage	Store at -8 centigrade. Aliquot to avoid repeated freezing and thawing.

 Tel: 1-631-559-9269 1-516-512-3133

 Email: info@creative-biomart.com  Fax: 1-631-938-8127

 45-1 Ramsey Road, Shirley, NY 11967, USA

Storage Buffer 50 mM Tris-HCl, 10 mM reduced Glutathione, pH=8.0 in the elution buffer.

GENE INFORMATION

Gene Name HSPB6 heat shock protein, alpha-crystallin-related, B6 [Homo sapiens]

Official Symbol HSPB6

Synonyms HSPB6; heat shock protein, alpha-crystallin-related, B6; heat shock protein beta-6; FLJ32389; Hsp20; heat shock 20 kDa-like protein p20;

Gene ID 126393

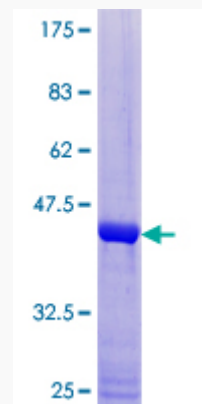
mRNA Refseq NM_144617

Protein Refseq NP_653218

MIM 610695

UniProt ID O14558

Quality Control Testing



 Tel: 1-631-559-9269 1-516-512-3133

 Email: info@creative-biomart.com  Fax: 1-631-938-8127

 45-1 Ramsey Road, Shirley, NY 11967, USA



12.5% SDS-PAGE Stained with Coomassie Blue.

 Tel: 1-631-559-9269 1-516-512-3133

 Email: info@creative-biomart.com  Fax: 1-631-938-8127

 45-1 Ramsey Road, Shirley, NY 11967, USA