

Recombinant Human HSPB7 Protein, GST-tagged

Cat. No. HSPB7-5118H Lot. No. (See product label)

SPECIFICATION

Product Overview	Human HSPB7 full-length ORF (AAH06319, 1 a.a. - 170 a.a.) recombinant protein with GST-tag at N-terminal.
Species	Human
Source	Wheat Germ
Description	This gene encodes a small heat shock family B member that can heterodimerize with similar heat shock proteins. Defects in this gene are associated with advanced heart failure. In addition, the encoded protein may be a tumor suppressor in the p53 pathway, with defects in this gene being associated with renal cell carcinoma. [provided by RefSeq, Mar 2017]
Molecular Mass	44.44 kDa
AA Sequence	MSHRTSSTFRAERSFHSSSSSSSSSTSSSASRALPAQDPPMEKALSMFSDDFGSF MRPHSEPLAFPARPGGAGNIKTLGDAYEFAVDVDFSPEDIIVTTSNNHIEVRAEKLA ADGTVMNTFAHKCQLPEDVDPTSVTSALREDGSLTIRARRHPHTEHVQQTFRTEIKI
Applications	Enzyme-linked Immunoabsorbent Assay Western Blot (Recombinant protein) Antibody Production Protein Array
Notes	Best use within three months from the date of receipt of this protein.

 Tel: 1-631-559-9269 1-516-512-3133

 Email: info@creative-biomart.com  Fax: 1-631-938-8127

 45-1 Ramsey Road, Shirley, NY 11967, USA

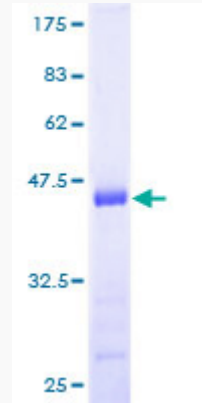
Storage	Store at -8 centigrade. Aliquot to avoid repeated freezing and thawing.
Storage Buffer	50 mM Tris-HCl, 10 mM reduced Glutathione, pH=8.0 in the elution buffer.
GENE INFORMATION	
Gene Name	HSPB7 heat shock 27kDa protein family, member 7 (cardiovascular) [Homo sapiens]
Official Symbol	HSPB7
Synonyms	HSPB7; heat shock 27kDa protein family, member 7 (cardiovascular); heat shock 27kD protein family, member 7 (cardiovascular); heat shock protein beta-7; cvHSP; cardiovascular heat shock protein; FLJ32733; DKFZp779D0968;
Gene ID	27129
mRNA Refseq	NM_014424
Protein Refseq	NP_055239
MIM	610692
UniProt ID	Q9UBY9

 Tel: 1-631-559-9269 1-516-512-3133

 Email: info@creative-biomart.com  Fax: 1-631-938-8127

 45-1 Ramsey Road, Shirley, NY 11967, USA

**Quality Control
Testing**



12.5% SDS-PAGE Stained with Coomassie Blue.

 Tel: 1-631-559-9269 1-516-512-3133

 Email: info@creative-biomart.com  Fax: 1-631-938-8127

 45-1 Ramsey Road, Shirley, NY 11967, USA