

Recombinant Full Length Human HSPB8 Protein, C-Flag-tagged

Cat. No. HSPB8-2016HFL **Lot. No.** (See product label)

SPECIFICATION

Product Overview	Recombinant Full Length Human HSPB8 Protein, fused to Flag-tag at C-terminus, was expressed in Mammalian cells.
Species	Human
Source	Mammalian Cells
Description	The protein encoded by this gene belongs to the superfamily of small heat-shock proteins containing a conservative alpha-crystallin domain at the C-terminal part of the molecule. The expression of this gene is induced by estrogen in estrogen receptor-positive breast cancer cells, and this protein also functions as a chaperone in association with Bag3, a stimulator of macroautophagy. Thus, this gene appears to be involved in regulation of cell proliferation, apoptosis, and carcinogenesis, and mutations in this gene have been associated with different neuromuscular diseases, including Charcot-Marie-Tooth disease.
Form	25 mM Tris HCl, pH 7.3, 100 mM glycine, 10% glycerol.
Molecular Mass	21.4 kDa
AA Sequence	MADGQMPFSCHYPSRLRRDPFRDPSLSSRLDDGFGMDPFPDDLTA SWPDWALP RLSSAWPGTLRSGMVP RGPTATARFGVPAEGRTPPFPGE PWKVCVNVHSFKPE ELMVKTKDGYVEVSGKHEEKQQEGGIVSKNFT KKIQLPAEVDPVTVFASLSPEGLLI EAPQVPPYSTFGESSFNNELPQDSQEVTCT TRTRPLEQKLISEEDLAANDILDYKDD

 Tel: 1-631-559-9269 1-516-512-3133

 Email: info@creative-biomart.com  Fax: 1-631-938-8127

 45-1 Ramsey Road, Shirley, NY 11967, USA

	DDKV
Purity	> 80% as determined by SDS-PAGE and Coomassie blue staining.
Stability	Stable for 12 months from the date of receipt of the product under proper storage and handling conditions. Avoid repeated freeze-thaw cycles.
Storage	Store at -80 centigrade.
Concentration	>50 ug/mL as determined by microplate BCA method.
Preparation	Recombinant protein was captured through anti-DDK affinity column followed by conventional chromatography steps.
Protein Families	Druggable Genome, Protein Kinase
Full Length	Full L.
GENE INFORMATION	
Gene Name	HSPB8 heat shock protein family B (small) member 8 [Homo sapiens (human)]
Official Symbol	HSPB8
Synonyms	H11; HMN2; CMT2L; DHMN2; E2IG1; HMN2A; HSP22
Gene ID	26353
mRNA Refseq	NM_014365.3
Protein Refseq	NP_055180.1

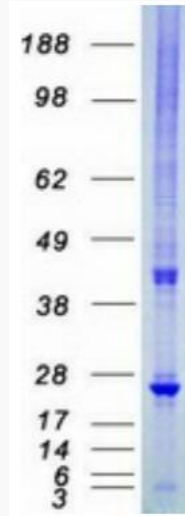
 Tel: 1-631-559-9269 1-516-512-3133

 Email: info@creative-biomart.com  Fax: 1-631-938-8127

 45-1 Ramsey Road, Shirley, NY 11967, USA

MIM 608014

UniProt ID Q9UJY1



Coomassie blue staining of purified HSPB8 protein.

 Tel: 1-631-559-9269 1-516-512-3133

 Email: info@creative-biomart.com  Fax: 1-631-938-8127

 45-1 Ramsey Road, Shirley, NY 11967, USA