

Recombinant Human HSPB8 Protein, GST-tagged

Cat. No. HSPB8-5120H Lot. No. (See product label)

SPECIFICATION

Product Overview	Human HSPB8 full-length ORF (AAH02673.1, 1 a.a. - 196 a.a.) recombinant protein with GST-tag at N-terminal.
Species	Human
Source	Wheat Germ
Description	The protein encoded by this gene belongs to the superfamily of small heat-shock proteins containing a conservative alpha-crystallin domain at the C-terminal part of the molecule. The expression of this gene is induced by estrogen in estrogen receptor-positive breast cancer cells, and this protein also functions as a chaperone in association with Bag3, a stimulator of macroautophagy. Thus, this gene appears to be involved in regulation of cell proliferation, apoptosis, and carcinogenesis, and mutations in this gene have been associated with different neuromuscular diseases, including Charcot-Marie-Tooth disease. [provided by RefSeq]
Molecular Mass	47.30 kDa
AA Sequence	MADGQMPFSCHYPSRLRRDPFRD SPLSSRLDDGFGMDPFPDDL TASWPDWALP RLSSAWPGTLRSGMVPRGPTATARFGVPAEGRTPPFPGE PWKVCNVH SFKPEE LMVKTKDGYVEVSGKHEEKQQEGGIVSKNFTKKIQLPAEVD PVTVFASLSPEGLLIE APQVPPYSTFGESSFNNE LPQDSQEVTCT
Applications	Enzyme-linked Immunoabsorbent Assay Western Blot (Recombinant protein)

 Tel: 1-631-559-9269 1-516-512-3133

 Email: info@creative-biomart.com  Fax: 1-631-938-8127

 45-1 Ramsey Road, Shirley, NY 11967, USA

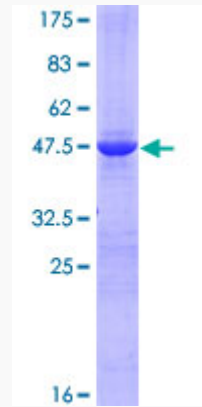
	Antibody Production Protein Array
Notes	Best use within three months from the date of receipt of this protein.
Storage	Store at -8 centigrade. Aliquot to avoid repeated freezing and thawing.
Storage Buffer	50 mM Tris-HCl, 10 mM reduced Glutathione, pH=8.0 in the elution buffer.
GENE INFORMATION	
Gene Name	HSPB8 heat shock 22kDa protein 8 [Homo sapiens]
Official Symbol	HSPB8
Synonyms	HSPB8; heat shock 22kDa protein 8; heat shock 27kDa protein 8; heat shock protein beta-8; E2IG1; H11; HSP22; HspB8; protein kinase H11; alpha-crystallin C chain; E2-induced gene 1 protein; small stress protein-like protein HSP22; HMN2; CMT2L; DHMN2; HMN2A;
Gene ID	26353
mRNA Refseq	NM_014365
Protein Refseq	NP_055180
MIM	608014
UniProt ID	Q9UJY1

 Tel: 1-631-559-9269 1-516-512-3133

 Email: info@creative-biomart.com  Fax: 1-631-938-8127

 45-1 Ramsey Road, Shirley, NY 11967, USA

**Quality Control
Testing**



12.5% SDS-PAGE Stained with Coomassie Blue.

 Tel: 1-631-559-9269 1-516-512-3133

 Email: info@creative-biomart.com  Fax: 1-631-938-8127

 45-1 Ramsey Road, Shirley, NY 11967, USA