

# Recombinant Human HSPB8 Protein, Myc/DDK-tagged, C13 and N15-labeled

**Cat. No.** HSPB8-6700H    **Lot. No.** (See product label)

## SPECIFICATION

### Product Overview

HSPB8 MS Standard C13 and N15-labeled recombinant protein (NP\_055180) with a C-terminal MYC/DDK tag, was expressed in HEK293 cells.

### Species

Human

### Source

HEK293

### Description

The protein encoded by this gene belongs to the superfamily of small heat-shock proteins containing a conservative alpha-crystallin domain at the C-terminal part of the molecule. The expression of this gene is induced by estrogen in estrogen receptor-positive breast cancer cells, and this protein also functions as a chaperone in association with Bag3, a stimulator of macroautophagy. Thus, this gene appears to be involved in regulation of cell proliferation, apoptosis, and carcinogenesis, and mutations in this gene have been associated with different neuromuscular diseases, including Charcot-Marie-Tooth disease.

### Molecular Mass

21.6 kDa

### AA Sequence

MADGQMPFSCHYPSRLRRDPFRDPSLSSRLDDGFGMDPFPDDLTA SWPDWALP  
 RLSSAWPGTLRSGMVPRGPTATARFGVPAEGRTPPPFPGE PWKVCNVH SFKPEE  
 LMVKT KDGYVEVSGKHEEKQQEGGIVSKNFTKKIQLPAEVD PVTVFASLSPEGLLIIE  
 APQVPPYSTFGESSFNNE LPQDSQEVTCTTRTRPLEQKLI SEEDLAANDILDYKDDD  
 DKV

 Tel: 1-631-559-9269    1-516-512-3133

 Email: [info@creative-biomart.com](mailto:info@creative-biomart.com)     Fax: 1-631-938-8127

 45-1 Ramsey Road, Shirley, NY 11967, USA

<b>Purity</b>	> 80% as determined by SDS-PAGE and Coomassie blue staining
<b>Stability</b>	Stable for 3 months from receipt of products under proper storage and handling conditions.
<b>Storage</b>	Store at -80 centigrade. Avoid repeated freeze-thaw cycles.
<b>Concentration</b>	50 µg/mL as determined by BCA
<b>Storage Buffer</b>	100 mM glycine, 25 mM Tris-HCl, pH 7.3.

## GENE INFORMATION

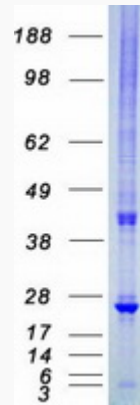
<b>Gene Name</b>	HSPB8 heat shock 22kDa protein 8 [ Homo sapiens (human) ]
<b>Official Symbol</b>	HSPB8
<b>Synonyms</b>	HSPB8; heat shock 22kDa protein 8; heat shock 27kDa protein 8; heat shock protein beta-8; E2IG1; H11; HSP22; HspB8; protein kinase H11; alpha-crystallin C chain; E2-induced gene 1 protein; small stress protein-like protein HSP22; HMN2; CMT2L; DHMN2; HMN2A;
<b>Gene ID</b>	26353
<b>mRNA Refseq</b>	NM_014365
<b>Protein Refseq</b>	NP_055180
<b>MIM</b>	608014
<b>UniProt ID</b>	Q9UJY1

 Tel: 1-631-559-9269 1-516-512-3133

 Email: [info@creative-biomart.com](mailto:info@creative-biomart.com)  Fax: 1-631-938-8127

 45-1 Ramsey Road, Shirley, NY 11967, USA

**SDS-PAGE**



 Tel: 1-631-559-9269 1-516-512-3133

 Email: [info@creative-biomart.com](mailto:info@creative-biomart.com)  Fax: 1-631-938-8127

 45-1 Ramsey Road, Shirley, NY 11967, USA