

# Recombinant Human HTR1B Full Length Transmembrane protein, His-tagged

Cat. No. HTR1B-0284H Lot. No. (See product label)

## SPECIFICATION

### Product Overview

Recombinant Human HTR1B protein(P28222)(1-390aa), fused with N-terminal His tag, was expressed in in vitro E. coli expression system.

### Species

Human

### Source

E.coli

### ProteinLength

1-390aa

### Form

If the delivery form is liquid, the default storage buffer is Tris/PBS-based buffer, 5%-50% glycerol.  
If the delivery form is lyophilized powder, the buffer before lyophilization is Tris/PBS-based buffer, 6% Trehalose, pH 8.0.

### Molecular Mass

45.1 kDa

### AA Sequence

MEEPGAQCAPPPPAGSETWVPQANLSSAPSQNCsAKDYIYQDSISLPWKVLLVMLL  
ALITLATTLSNAFVIATVYRTRKLTHTPANYLIASLAVTDLLVSILVMPISTMYTVTGRWT  
LGQVVCDLFWLSSDITCCTASILHLCVIALDRYWAITDAVEYSKRTPKRAAVMIALVW  
VFSISISLPPFFWRQAKAEVEEVSECVVNTDHILYTVYSTVGAFYFPTLLLIALLYGRIYVE  
ARSRILKQTPNRTGKRLTRAQLITDSPGSTSSVTSINSRVPDVPSESGSPVYVNQVK  
VRVSDALLEKKKLMAARERKATKTLGILGAFIVCWLPFFIISLVMPICKDACWFHLAIF  
DFFTWLGYLNSLINPIIYTMSNEDFKQAFHKLIRFKCTS

 Tel: 1-631-559-9269 1-516-512-3133

 Email: [info@creative-biomart.com](mailto:info@creative-biomart.com)  Fax: 1-631-938-8127

 45-1 Ramsey Road, Shirley, NY 11967, USA

<b>Purity</b>	Greater than 85% as determined by SDS-PAGE.
<b>Storage</b>	Store at -20°C/-80°C upon receipt, aliquoting is necessary for mutiple use. Avoid repeated freeze-thaw cycles.
<b>Reconstitution</b>	Please reconstitute protein in deionized sterile water to a concentration of 0.1-1.0 mg/mL. We recommend to add 5-50% of glycerol (final concentration) and aliquot for long-term storage at -20°C/-80°C.

## GENE INFORMATION

<b>Gene Name</b>	HTR1B 5-hydroxytryptamine (serotonin) receptor 1B, G protein-coupled [ Homo sapiens ]
<b>Official Symbol</b>	HTR1B
<b>Synonyms</b>	HTR1B; 5-hydroxytryptamine (serotonin) receptor 1B, G protein-coupled; 5 hydroxytryptamine (serotonin) receptor 1B; 5-hydroxytryptamine receptor 1B; 5 HT1B; 5 HT1DB; HTR1D2; S12; 5-HT-1B; 5-HT-1D-beta; serotonin receptor 1B; serotonin 1D beta receptor; 5-HT1B; HTR1DB; 5-HT1DB;
<b>Gene ID</b>	3351
<b>mRNA Refseq</b>	NM_000863
<b>Protein Refseq</b>	NP_000854
<b>MIM</b>	182131
<b>UniProt ID</b>	P28222

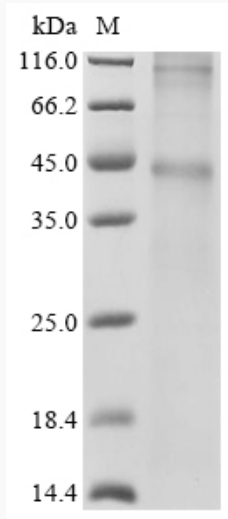
 Tel: 1-631-559-9269 1-516-512-3133

 Email: [info@creative-biomart.com](mailto:info@creative-biomart.com)  Fax: 1-631-938-8127

 45-1 Ramsey Road, Shirley, NY 11967, USA



SDS-PAGE



Tel: 1-631-559-9269 1-516-512-3133

Email: [info@creative-biomart.com](mailto:info@creative-biomart.com) Fax: 1-631-938-8127

45-1 Ramsey Road, Shirley, NY 11967, USA