

Recombinant Human HTRA1 Protein, MYC/DDK-tagged, C13 and N15-labeled

Cat. No. HTRA1-090H **Lot. No.** (See product label)

SPECIFICATION

Product Overview	HTRA1 MS Standard C13 and N15-labeled recombinant protein (NP_002766) with a C-terminal MYC/DDK tag, was expressed in HEK293 cells.
Species	Human
Source	HEK293
Description	This gene encodes a member of the trypsin family of serine proteases. This protein is a secreted enzyme that is proposed to regulate the availability of insulin-like growth factors (IGFs) by cleaving IGF-binding proteins. It has also been suggested to be a regulator of cell growth. Variations in the promoter region of this gene are the cause of susceptibility to age-related macular degeneration type 7.
Molecular Mass	51.53 kDa
AA Sequence	<p>MQIPRAALLPLLLLLLAAPASAQLSRAGRSAPLAAGCPDRCEPARCPPQPEHCEGG RARDACGCCEVCGAPEGAACGLQEGPCGEGQLQCVVFPVGPASATVRRRAQAGLC VCASSEPVCGSDANTYANLQCQLRAASRRSERLHRPPVIVLQRGACGQGQEDPNSL RHKYNFIADVVEKIAPAVVHIELFRKLPFSKREVPVASGSGFVISEDGLIVTNAHVVTN KHRVKVELKNGATYEAKIKDVDEKADIALIKIDHQGKLPVLLLGRSSELRPGEFVVAIG SPFSLQNTVTTGIVSTTQRGGKELGLRNSDMDYIQTDIINYGNSSGGLVNLGDGEVIG INTLKVTAGISFAIPSDKIKKFLTESHDRQAKGKAITKKKYIGIRMMSLTSSKAKELKDR HRDFPDVISGAYIIEVIPDTPAEAGGLKENDVIISINGQSVVSANDVSDVIKRESTLNMV</p>

 Tel: 1-631-559-9269 1-516-512-3133

 Email: info@creative-biomart.com  Fax: 1-631-938-8127

 45-1 Ramsey Road, Shirley, NY 11967, USA

VRRGNEDIMITVIPEEIDPSGSPGPTRRRLEQKLISEEDLAANDILDYKDDDDKV

Purity > 80% as determined by SDS-PAGE and Coomassie blue staining

Stability Stable for 3 months from receipt of products under proper storage and handling conditions.

Storage Store at -80 centigrade. Avoid repeated freeze-thaw cycles.

Concentration 50 µg/mL as determined by BCA

Storage Buffer 100 mM glycine, 25 mM Tris-HCl, pH 7.3.

GENE INFORMATION

Gene Name [HTRA1 HtrA serine peptidase 1 \[Homo sapiens \(human\) \]](#)

Official Symbol [HTRA1](#)


Synonyms HTRA1; HtrA serine peptidase 1; ARMD7; CADASIL2; CARASIL; HtrA; L56; ORF480; PRSS11; serine protease HTRA1; IGFBP5-protease; high-temperature requirement A serine peptidase 1; protease, serine, 11 (IGF binding); EC 3.4.21.-

Gene ID [5654](#)

mRNA Refseq [NM_002775](#)

Protein Refseq [NP_002766](#)

MIM [602194](#)

 Tel: 1-631-559-9269 1-516-512-3133

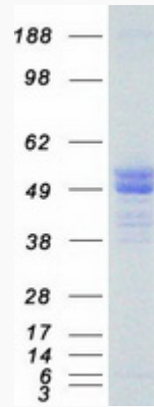
 Email: info@creative-biomart.com  Fax: 1-631-938-8127

 45-1 Ramsey Road, Shirley, NY 11967, USA

UniProt ID

Q92743

SDS-PAGE



 Tel: 1-631-559-9269 1-516-512-3133

 Email: info@creative-biomart.com  Fax: 1-631-938-8127

 45-1 Ramsey Road, Shirley, NY 11967, USA