

Recombinant Human HTRA1 Mutant (R310A, E306A) Protein, Myc/DDK-tagged

Cat. No. HTRA1-129H **Lot. No.** (See product label)

SPECIFICATION

Product Overview	Purified mutant recombinant protein of Human HtrA serine peptidase 1 (HTRA1), residues 161-369aa and mutation at (R310A, E306A) with a Myc/DDK tag was expressed in HEK293
Species	Human
Source	HEK293
ProteinLength	161-369
Description	This gene encodes a member of the trypsin family of serine proteases. This protein is a secreted enzyme that is proposed to regulate the availability of insulin-like growth factors (IGFs) by cleaving IGF-binding proteins. It has also been suggested to be a regulator of cell growth. Variations in the promoter region of this gene are the cause of susceptibility to age-related macular degeneration type 7.
Molecular Mass	22.5 kDa
Purity	> 80% as determined by SDS-PAGE and Coomassie blue staining
Stability	Stable for at least 12 months from receipt of products under proper storage and handling conditions. Avoid repeated freeze-thaw cycles.
Storage	Store at -80 centigrade after receiving vials.

 Tel: 1-631-559-9269 1-516-512-3133

 Email: info@creative-biomart.com  Fax: 1-631-938-8127

 45-1 Ramsey Road, Shirley, NY 11967, USA

Concentration > 50 µg/mL as determined by microplate Bradford method

Storage Buffer 25 mM Tris.HCl, pH 7.3, 100 mM glycine, 10% glycerol

GENE INFORMATION

Gene Name [HTRA1 HtrA serine peptidase 1 \[Homo sapiens \(human\) \]](#)

Official Symbol [HTRA1](#)

Synonyms HTRA1; HtrA serine peptidase 1; L56; HtrA; ARMD7; ORF480; PRSS11; CARASIL; CADASIL2; serine protease HTRA1; IGFBP5-protease high-temperature requirement A serine peptidase 1; protease, serine, 11 (IGF binding); EC 3.4.21.-

Gene ID [5654](#)

mRNA Refseq [NM_002775](#)

Protein Refseq [NP_002766](#)

MIM [602194](#)

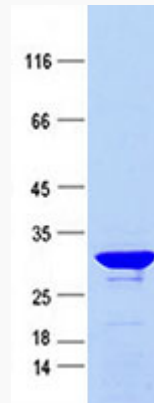
UniProt ID [Q92743](#)

 Tel: 1-631-559-9269 1-516-512-3133

 Email: info@creative-biomart.com  Fax: 1-631-938-8127

 45-1 Ramsey Road, Shirley, NY 11967, USA

SDS-PAGE



Purified recombinant protein HTRA (R310A E306A) was analyzed by SDS-PAGE gel and Coomossie Blue Staining.

 Tel: 1-631-559-9269 1-516-512-3133

 Email: info@creative-biomart.com  Fax: 1-631-938-8127

 45-1 Ramsey Road, Shirley, NY 11967, USA