

# Recombinant Human HTRA1 Mutant (R302A) Protein, Myc/DDK-tagged

**Cat. No.** HTRA1-131H    **Lot. No.** (See product label)

## SPECIFICATION

<b>Product Overview</b>	Purified mutant recombinant protein of Human HtrA serine peptidase 1 (HTRA1), residues 161-369aa and mutation at(R302A) with a Myc/DDK tag was expressed in HEK293
<b>Species</b>	Human
<b>Source</b>	HEK293
<b>ProteinLength</b>	161-369
<b>Description</b>	This gene encodes a member of the trypsin family of serine proteases. This protein is a secreted enzyme that is proposed to regulate the availability of insulin-like growth factors (IGFs) by cleaving IGF-binding proteins. It has also been suggested to be a regulator of cell growth. Variations in the promoter region of this gene are the cause of susceptibility to age-related macular degeneration type 7.
<b>Molecular Mass</b>	22.5 kDa
<b>Purity</b>	> 80% as determined by SDS-PAGE and Coomassie blue staining
<b>Stability</b>	Stable for at least 12 months from receipt of products under proper storage and handling conditions. Avoid repeated freeze-thaw cycles.
<b>Storage</b>	Store at -80 centigrade after receiving vials.

 Tel: 1-631-559-9269    1-516-512-3133

 Email: [info@creative-biomart.com](mailto:info@creative-biomart.com)     Fax: 1-631-938-8127

 45-1 Ramsey Road, Shirley, NY 11967, USA

**Concentration** > 50 µg/mL as determined by microplate Bradford method

**Storage Buffer** 25 mM Tris.HCl, pH 7.3, 100 mM glycine, 10% glycerol

## GENE INFORMATION

**Gene Name** [HTRA1 HtrA serine peptidase 1 \[ Homo sapiens \(human\) \]](#)

**Official Symbol** [HTRA1](#)

**Synonyms** HTRA1; HtrA serine peptidase 1; L56; HtrA; ARMD7; ORF480; PRSS11; CARASIL; CADASIL2; serine protease HTRA1; IGFBP5-protease high-temperature requirement A serine peptidase 1; protease, serine, 11 (IGF binding); EC 3.4.21.-

**Gene ID** [5654](#)

**mRNA Refseq** [NM\\_002775](#)

**Protein Refseq** [NP\\_002766](#)

**MIM** [602194](#)

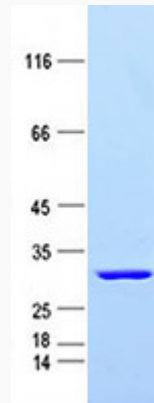
**UniProt ID** [Q92743](#)

 Tel: 1-631-559-9269 1-516-512-3133

 Email: [info@creative-biomart.com](mailto:info@creative-biomart.com)  Fax: 1-631-938-8127

 45-1 Ramsey Road, Shirley, NY 11967, USA

**SDS-PAGE**



Purified recombinant protein HTRA (R302A) was analyzed by SDS-PAGE gel and Coomossie Blue Staining.

 Tel: 1-631-559-9269 1-516-512-3133

 Email: [info@creative-biomart.com](mailto:info@creative-biomart.com)  Fax: 1-631-938-8127

 45-1 Ramsey Road, Shirley, NY 11967, USA