

## Recombinant Human HTRA1 protein, His-tagged

Cat. No. HTRA1-1445H Lot. No. (See product label)

### SPECIFICATION

<b>Product Overview</b>	Recombinant Human HTRA1 protein(Q92743)(Gln23-Pro480), fused with C-terminal His tag, was expressed in E.coli.
<b>Species</b>	Human
<b>Source</b>	C-His
<b>ProteinLength</b>	Gln23-Pro480
<b>Tag</b>	C-His
<b>Form</b>	Supplied as 0.22µm filtered solution in 50 mM Tris, 500 mM NaCl (pH 8.5).
<b>Bio-activity</b>	
<b>Molecular Mass</b>	The protein has a predicted MW of 50.14 kDa. The protein migrates to 38-40 kDa based on Tris-Bis PAGE result.
<b>Endotoxin</b>	Less than 1EU per µg by the LAL method.
<b>Purity</b>	> 95% as determined by Tris-Bis PAGE.
<b>Storage</b>	Valid for 12 months from date of receipt when stored at -80°C.;Recommend to aliquot the protein into smaller quantities for optimal storage. Please do not repeated freeze-thaw cycles.

 Tel: 1-631-559-9269 1-516-512-3133

 Email: [info@creative-biomart.com](mailto:info@creative-biomart.com)  Fax: 1-631-938-8127

 45-1 Ramsey Road, Shirley, NY 11967, USA

**Reconstitution** It is recommended that sterile water be added to the vial to prepare a stock solution of 0.2 ug/ul. Centrifuge the vial at 4°C before opening to recover the entire contents.

## GENE INFORMATION

**Gene Name** [HTRA1 HtrA serine peptidase 1 \[ Homo sapiens \]](#)

**Official Symbol** [HTRA1](#)

**Synonyms** HTRA1; HtrA serine peptidase 1; protease, serine, 11 (IGF binding) , PRSS11; serine protease HTRA1; HtrA; IGFBP5 protease; IGFBP5-protease; protease, serine, 11 (IGF binding); high-temperature requirement A serine peptidase 1; L56; ARMD7; ORF480; PRSS11;

**Gene ID** [5654](#)

**mRNA Refseq** [NM\\_002775](#)

**Protein Refseq** [NP\\_002766](#)

**MIM** [602194](#)

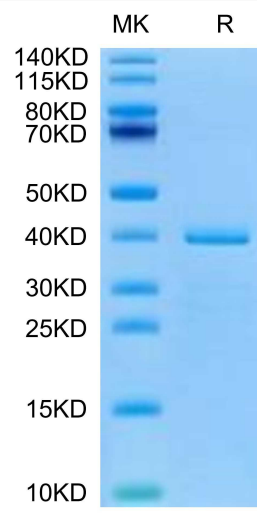
**UniProt ID** [Q92743](#)

 Tel: 1-631-559-9269 1-516-512-3133

 Email: [info@creative-biomart.com](mailto:info@creative-biomart.com)  Fax: 1-631-938-8127

 45-1 Ramsey Road, Shirley, NY 11967, USA

**Tris-Bis PAGE**



 Tel: 1-631-559-9269 1-516-512-3133

 Email: [info@creative-biomart.com](mailto:info@creative-biomart.com)  Fax: 1-631-938-8127

 45-1 Ramsey Road, Shirley, NY 11967, USA