

Active Recombinant Full Length Human HTRA1 Protein, C-Flag-tagged

Cat. No. HTRA1-19HFL **Lot. No.** (See product label)

SPECIFICATION

Product Overview	Recombinant Full Length Human HTRA1 Protein, fused to Flag-tag at C-terminus, was expressed in Mammalian cells.
Species	Human
Source	Mammalian Cells
Description	This gene encodes a member of the trypsin family of serine proteases. This protein is a secreted enzyme that is proposed to regulate the availability of insulin-like growth factors (IGFs) by cleaving IGF-binding proteins. It has also been suggested to be a regulator of cell growth. Variations in the promoter region of this gene are the cause of susceptibility to age-related macular degeneration type 7.
Form	25 mM Tris HCl, pH 7.3, 100 mM glycine, 10% glycerol.
Bio-activity	Protein degradation enzyme Enzyme activity
Molecular Mass	49 kDa
AA Sequence	MQIPRAALLPLLLLLLAAPASAQLSRAGRSAPLAAGCPDRCEPARCPPQPEHCEGG RARDACGCCEVCG APEGAACGLQEGPCGEGLCQCVVPGVVPASATVRRRAQAGLC VCASSEPVCGSDANTYANLCQLRAASRR SERLHRPPVIVLQRGACGQGQEDPNSL RHKYNFIADVVEKIAPAVVHIELFRKLPFSKREVPVASGSGF IVSEDGLIVTNAHVVTN

 Tel: 1-631-559-9269 1-516-512-3133

 Email: info@creative-biomart.com  Fax: 1-631-938-8127

 45-1 Ramsey Road, Shirley, NY 11967, USA

KHRVKVELKNGATYEAKIKDVDEKADIALIKIDHQGKLPVLLLGRSSELRPG EFVVAIG
 SPFSLQNTVTTGIVSTTQRGGKELGLRNSDMDYIQTDAIINYGNSGGPLVNL DGEVIG
 INTL KVTAGISFAIPSDKIKKFLTESHDRQAKGKAITKKKYIGIRMMSLTSSKAKELKDR
 HRDFPDVISGAYI IEVIPDTPAEAGGLKENDVIISINGQSVVSANDVSDVIKRESTLNM
 VVRRGNEDIMITVIPEEIDP

Purity > 80% as determined by SDS-PAGE and Coomassie blue staining.

Stability Stable for 12 months from the date of receipt of the product under proper storage and handling conditions. Avoid repeated freeze-thaw cycles.

Storage Store at -80 centigrade.

Concentration >50 ug/mL as determined by microplate BCA method.

Preparation Recombinant protein was captured through anti-DDK affinity column followed by conventional chromatography steps.

Protein Families Druggable Genome, Protease, Secreted Protein

Full Length Full L.

GENE INFORMATION

Gene Name [HTRA1 HtrA serine peptidase 1 \[Homo sapiens \(human\) \]](#)

Official Symbol [HTRA1](#)

Synonyms L56; HtrA; ARMD7; ORF480; PRSS11; CARASIL; CADASIL2

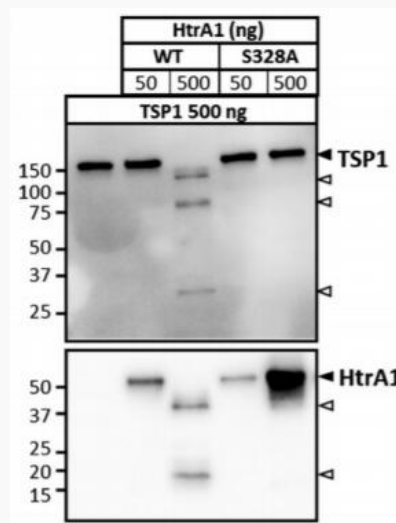
Gene ID [5654](#)

 Tel: 1-631-559-9269 1-516-512-3133

 Email: info@creative-biomart.com  Fax: 1-631-938-8127

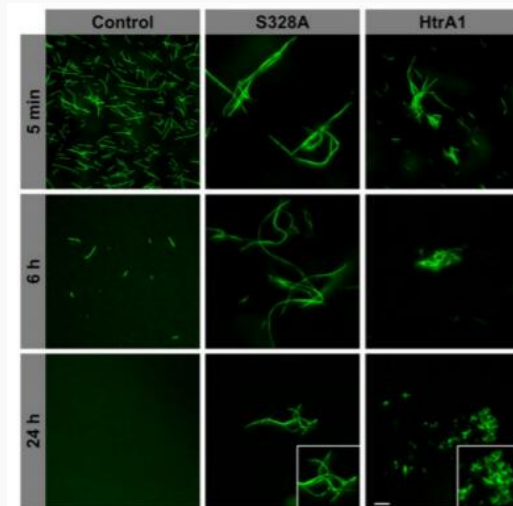
 45-1 Ramsey Road, Shirley, NY 11967, USA

mRNA Refseq	NM_002775.5
Protein Refseq	NP_002766.1
MIM	602194
UniProt ID	Q92743

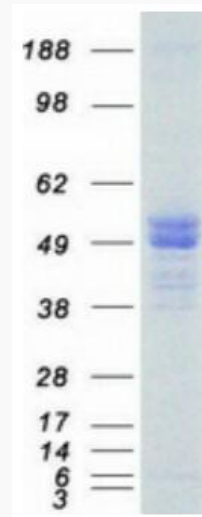


An in vitro cleavage assay shows TSP1 is a direct substrate of HtrA1. TSP1 (500 ng) were incubated with the indicated amount of active HtrA1WT (WT) or inactive HtrA1S328A (S328A). The cleavage events were analyzed by immunoblotting. The

filled triangle is the full-length form of TSP1 and HtrA1. The empty triangle is proteolysis products. TSP1 was probed using an antibody specific to the N-terminal domain. The molecular weight (kDa) reference is indicated in the left side of the image.



HtrA1 degrades preformed microtubules and avoids polymerization in vitro. Fluorescently labeled microtubules were polymerized in vitro and incubated with S328A HtrA1 and HtrA1 (right). Images were acquired at 5 minutes, 6 hours, and 24 hours after adding HtrA1.




Tel: 1-631-559-9269 1-516-512-3133

Email: info@creative-biomart.com Fax: 1-631-938-8127


45-1 Ramsey Road, Shirley, NY 11967, USA



Coomassie blue staining of purified HTRA1 protein.

 Tel: 1-631-559-9269 1-516-512-3133

 Email: info@creative-biomart.com  Fax: 1-631-938-8127

 45-1 Ramsey Road, Shirley, NY 11967, USA